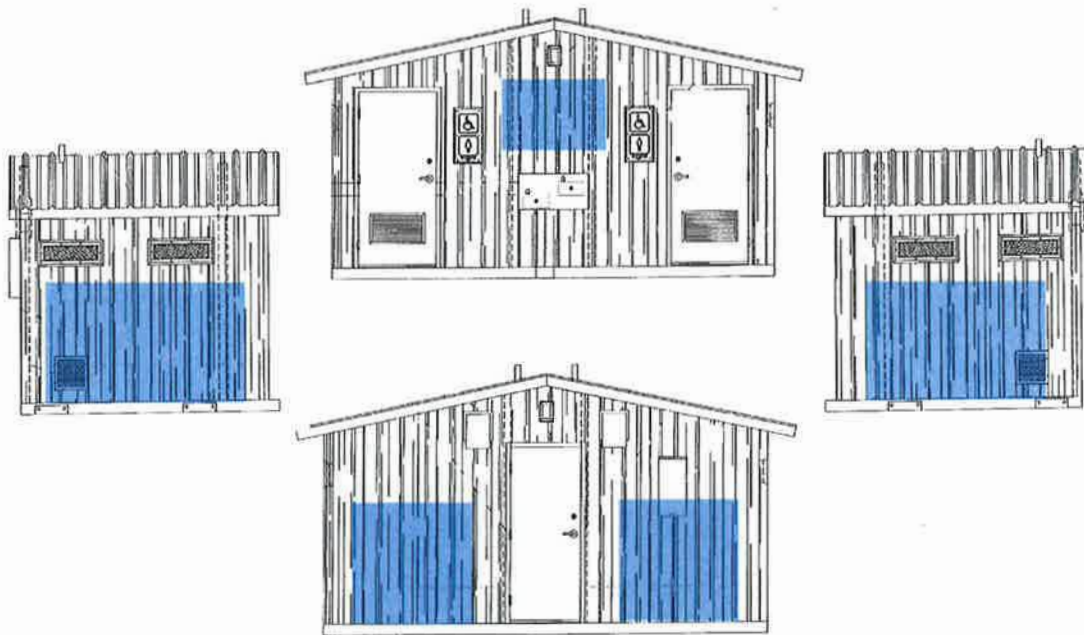


Leslie Tharp
 LeslieTharp.com
 239-671-8399
 LeslieTharpDesigns@gmail.com



Hogtown Headwaters Public Art Project



Design Development

Based on the initial site visit, the above highlighted spaces were identified as key locations for a decorative cut metal composition. The blue squares shown above indicate a general size and location for the work, but do not necessarily imply color or shape (will be confirmed in design phase).

The theme for this piece can be chosen from the following three themes:

1. Water, Springs, Headwaters, Rivers.
2. Earth and Water, Trees, plants, fauna, insects and the water that feeds them.
3. The Cattle History of the property.

Leslie Tharp
LeslieTharp.com
239-671-8399
LeslieTharpDesigns@gmail.com



Project Budget

Design, includes image development, 1 potential revision, and computer programming to be laser cut: \$800

Laser cut 3/16" gauge steel and fabrication: \$1570

Paint with single color auto-grade 2-part catalyzed paint: \$830

Install directly to the side of the building with an offset of approximately 2": \$600

Preferred Payment Schedule

Payment 1 of \$800: Released to initiate design development. Imagery will be created and submitted for approval prior to computer programming for laser cut. At this time, the design can be revised one time before its final submission.

Payment 2 of \$2400: Released once design submission is approved and prior to fabrication.

At this stage the imagery will be laser cut into steel, and fabricated in the shop to soften the edges of the metal and include mounting brackets for installation.

The steel will then be painted and prepared for installation.

Payment 3 of \$600: Once installation is completed the final invoice will be submitted.

Next Steps

Confirm image concept.

Release Payment 1 for design development.

Release Payment 2 upon design approval to initiate fabrication

Release Payment 3 once install is complete.

Leslie Tharp
LeslieTharp.com
239-671-8399
LeslieTharpDesigns@gmail.com



About the Artist

Leslie Tharp is a Gainesville metal artist specializing in large-scale public art. Her portfolio includes a wide range of work that is seen throughout the country and her approach to each project is always unique to the space she is creating for.

Below is a recent project completed for the Doral Glades Nature Museum in Doral, FL. This piece, titled *Explore* showcases the whimsical aesthetic of cut steel silhouettes, while highlighting the extensive ecosystems of the Everglades.



Explore

9' H x 16' W x 4' D

