



Septic To Sewer Evaluation  
Fox Grove & Featherwood  
Joint Water Policy Committee  
February 24, 2020

# Fox Grove/Featherwood Neighborhoods

- Developed in 1980s
- 54 lots total
- Ridgeview Creek runs through Featherwood
- Resident concerns - future drainfield replacements & potential creek impacts
- Fox Grove Neighborhood Meeting January 27, 2020
  - 3 Septic to Sewer Alternatives

# Fox Grove & Featherwood Location

Imputed Septic Tanks Within  
GRU's WW Service Territory

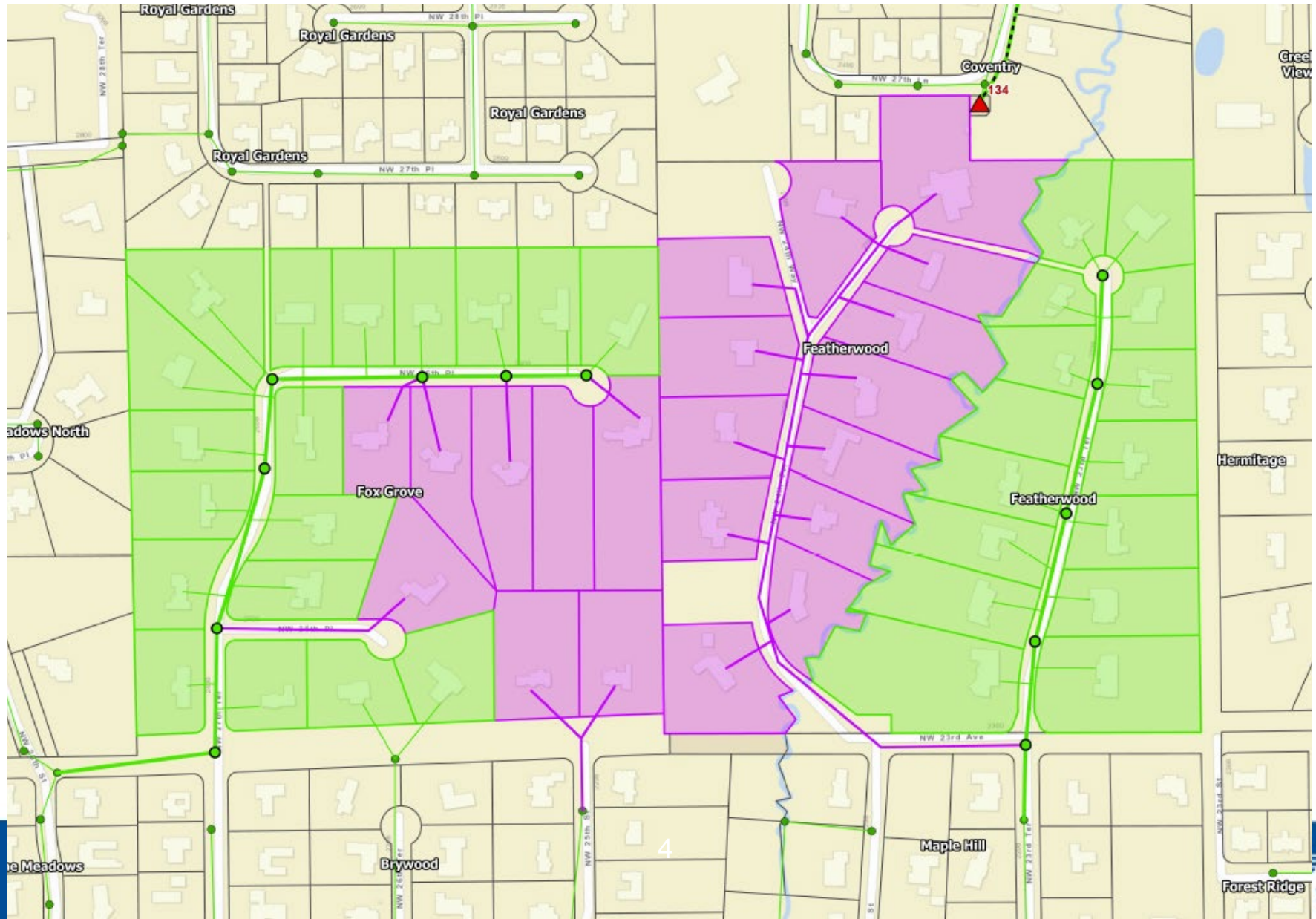
Fox Grove &  
Featherwood

- Imputed Septic Tanks (6064)
- Creeks
- GRU WW Service Territory
- City Boundary



0 0.75 1.5 3 Miles

# Alt 1 – Gravity & Lower Pressure

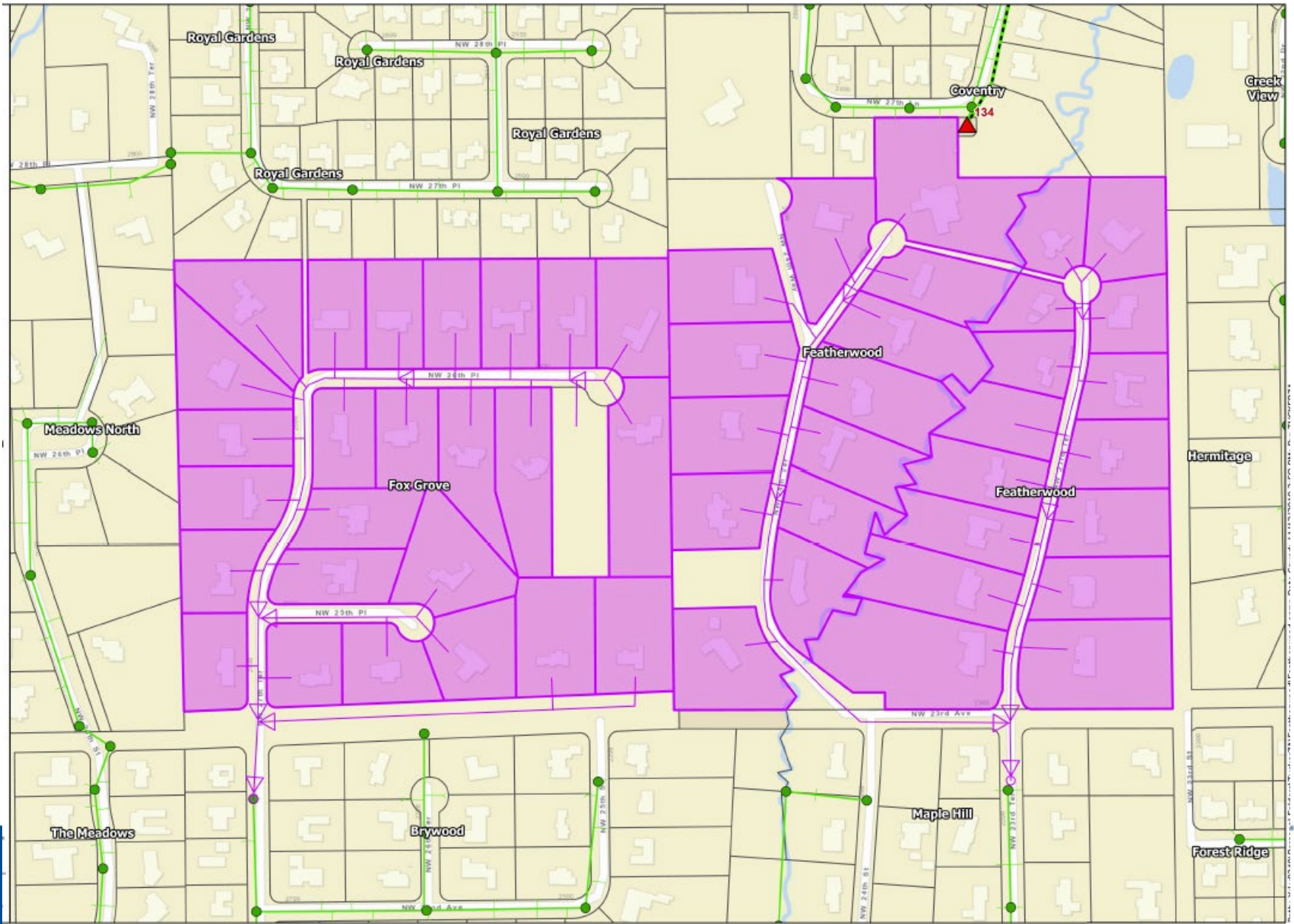


This map illustrates a proposed street layout and green spaces in the NW 24th St area of Grand Rapids, Michigan. The map features several key locations and streets:

- Streets:** NW 24th St, NW 23rd St, NW 22nd St, NW 21st St, NW 20th St, NW 19th St, NW 18th St, NW 17th St, NW 16th St, NW 15th St, NW 14th St, NW 13th St, NW 12th St, NW 11th St, NW 10th St, NW 9th St, NW 8th St, NW 7th St, NW 6th St, NW 5th St, NW 4th St, NW 3rd St, NW 2nd St, NW 1st St.
- Green Spaces:** Fox Grove, Featherwood, Meadows North, The Meadows, Brywood, Maple Hill, Forest Ridge, Hermitage, Creek View.
- Proposed Layout:** A new street, NW 24th St, is shown running horizontally across the center of the map. It is flanked by green spaces on both sides. To the north of NW 24th St, there are several blocks of residential lots. To the south, there are more residential lots and a larger green space area.
- Other Features:** A red triangle marker labeled "134" is located near the intersection of NW 24th St and NW 23rd St. A blue line representing a water feature (likely a creek or river) runs along the right edge of the map.



# Alt 3 – Low Pressure



# Estimated Costs

	Alternative 1		Alternative 2		Alternative 3	
	Gravity Sewer & Low Pressure Sewer		Gravity to Lots That Can be Served by Gravity		Low Pressure Grinder Pump System	
	<u>100% Participation</u>	<u>50% Participation</u>	<u>100% Participation</u>	<u>50% Participation</u>	<u>100% Participation</u>	<u>50% Participation</u>
<b><u>COSTS</u></b>						
Backbone Cost	\$1,715,044	\$1,715,044	\$1,515,044	\$1,515,044	\$500,000	\$500,000
On-Lot Costs	<u>\$836,128</u>	<u>\$399,064</u>	<u>\$206,848</u>	<u>\$103,424</u>	<u>\$1,636,128</u>	<u>\$818,064</u>
<b>Total Cost</b>	<b>\$2,551,172</b>	<b>\$2,114,108</b>	<b>\$1,721,892</b>	<b>\$1,618,468</b>	<b>\$2,136,128</b>	<b>\$1,318,064</b>
Total Cost/lot	\$49,061	\$81,312	\$53,809	\$101,154	\$41,079	\$50,695
<b><u>POSSIBLE FUNDING*</u></b>						
State	\$1,275,586	\$1,057,054	\$860,946	\$809,234	\$1,131,677	\$640,838
Local	<u>\$280,128</u>	<u>\$190,064</u>	<u>\$210,848</u>	<u>\$155,424</u>	<u>\$350,000</u>	<u>\$350,000</u>
<b>Total Possible Funding</b>	<b>\$1,555,714</b>	<b>\$1,247,118</b>	<b>\$1,071,794</b>	<b>\$964,658</b>	<b>\$1,481,677</b>	<b>\$990,838</b>
<b><u>HOMEOWNER COST</u></b>						
Total Homeowner Cost	\$995,458	\$866,990	\$650,098	\$653,810	\$654,451	\$327,226
<b>Homeowner Cost/Lot</b>	<b>\$19,143</b>	<b>\$33,346</b>	<b>\$20,316</b>	<b>\$40,863</b>	<b>\$12,586</b>	<b>\$12,586</b>

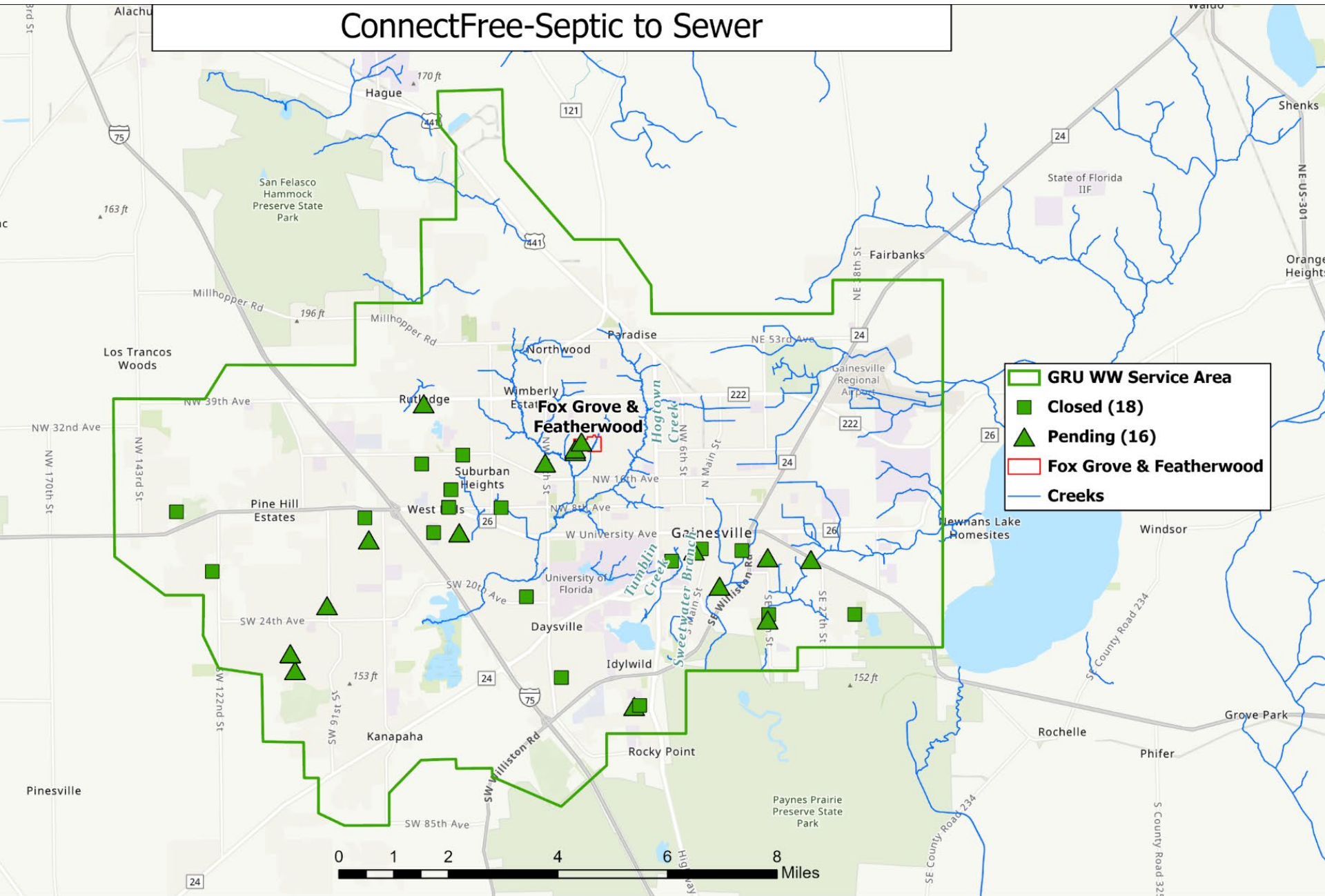
\*State funding amount based on maximum possible funding that could be achieved through existing programs or legislative allocation. Local funds subject to funds availability and city commission approval.

# ConnectFree Program

- Administered by City Housing Division in partnership w/ GRU
- Includes connection of existing individual homes w/ *failing* septic systems to sanitary sewer, *where feasible*
  - \$25,000 per home cap on extension cost
- 18 homes connected so far
  - Most are short extensions to a nearby gravity sewer
- Limitations on fund availability



ConnectFree-Septic to Sewer
-----------------------------



# Current Status

- Fox Grove & Featherwood residents are considering
  - Minimum 50% participation needed to go forward
- GRU formulating policies for low pressure sewer systems
- ConnectFree Update to CityCom soon
- SJRWMD grant funding sought for ConnectFree sewer connections near creeks