



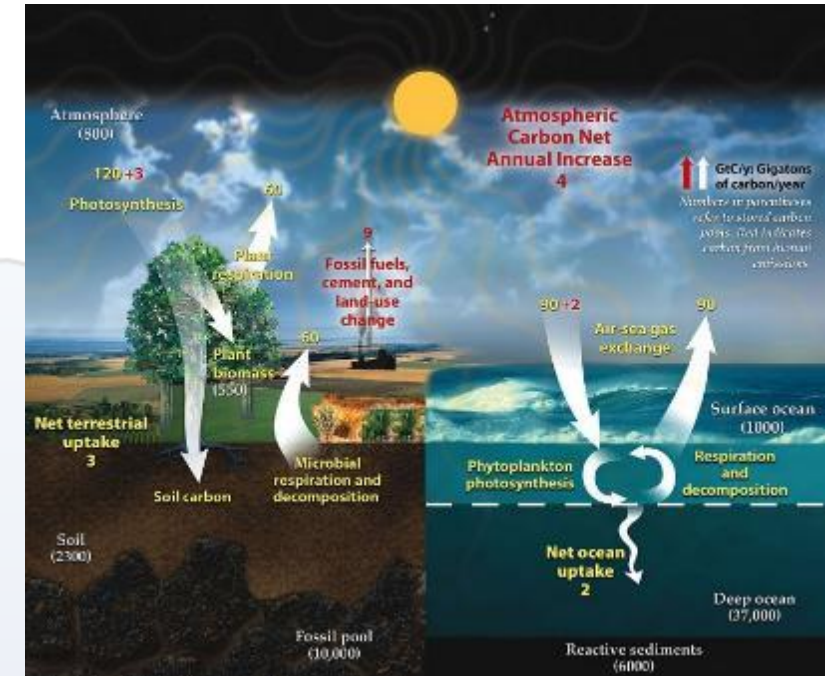
Item #200059
JWPC

Alachua County Climate Change Past, Present, and Future

June 22, 2020

Emerging Local Government Role in responding to Climate Change

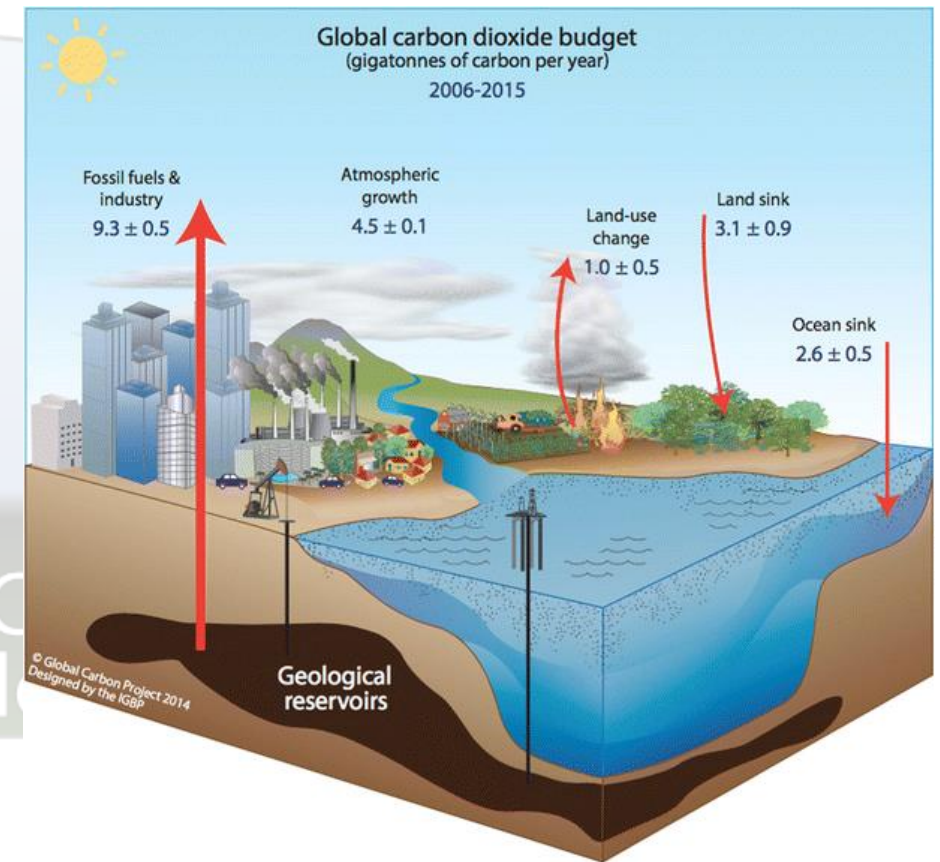
- Mitigation
- Resilience
- Equity and Public Health Concerns



Alachua County Climate Mitigation

Reducing Carbon, Energy, Food, Consumption Footprints

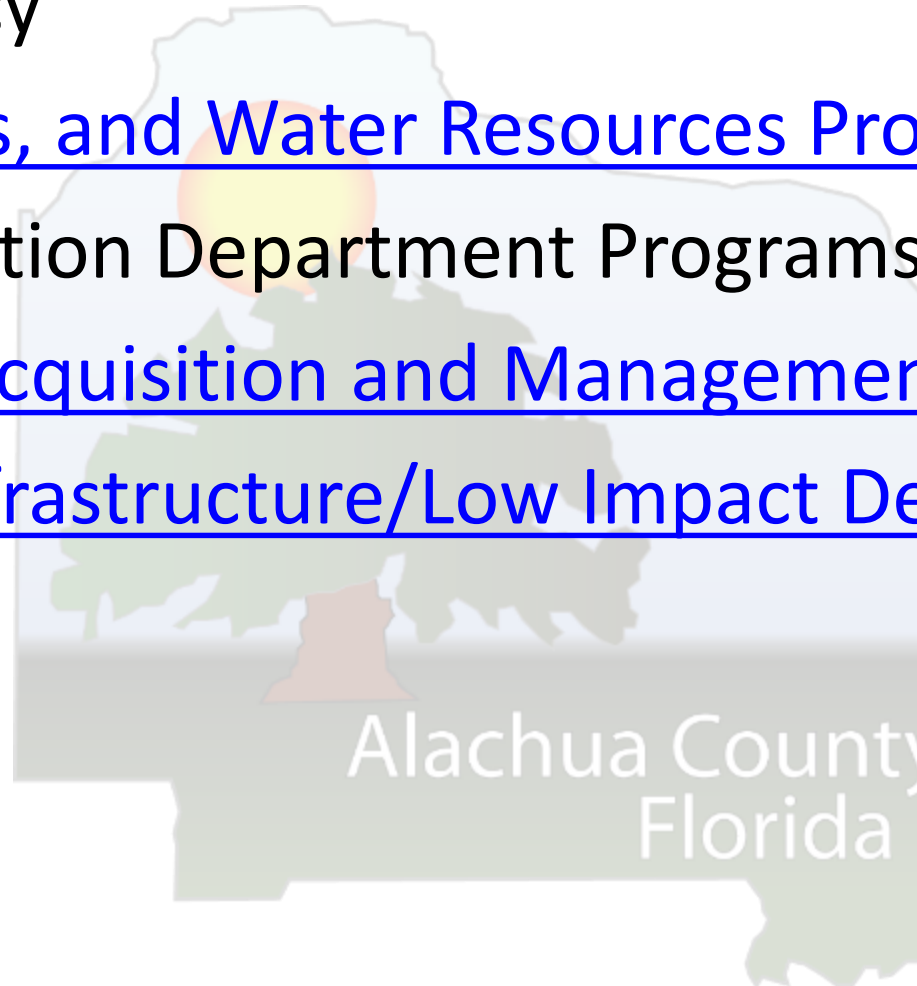
- [Energy conservation](#)
- [Reduced reliance on fossil fuels](#)
- [Solar PV](#)
- [Regenerative agriculture](#)
- [Waste reduction, reuse, and recycling](#)
- [Wildfire mitigation](#)



Alachua County Climate Resilience

Environmental Resiliency

- [Wetlands, Floodplains, and Water Resources Protection](#)
- Environmental Protection Department Programs
- [Conservation Lands Acquisition and Management](#)
- [Stormwater Green Infrastructure/Low Impact Design](#)
- Water Conservation
- Water Supply



Alachua County Climate Resilience (continued)

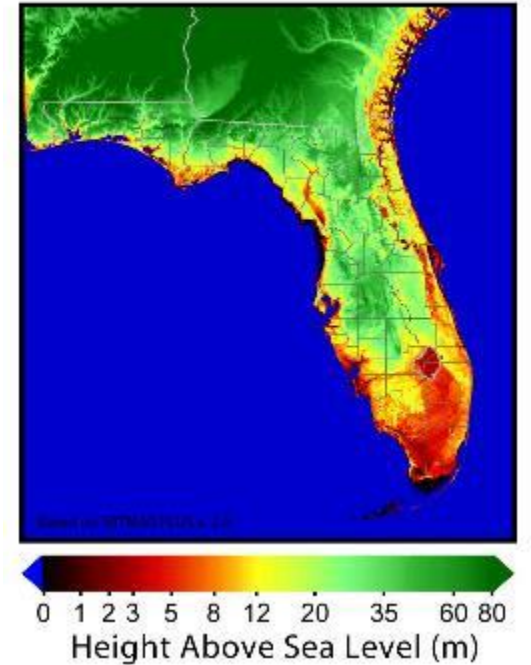
- [Mobility and Transportation](#)
- Emergency Preparation and Response to Extreme Weather
- [Local Food and Regenerative Agriculture](#)
- [Resilient Landscapes](#)
- Supply chains



Emerging Equity and Health Concerns

- Managing climate related stress
- Impacts on disadvantaged communities
- Impact on public health and social services
- Population migration and climate refugees
- Infectious diseases (tick and mosquito)
- Housing shortfalls and homelessness
- Fiscal impact of strategies on disadvantaged

Sea Level Risks - Florida



Resilience Challenges



Transportation,
Connectivity



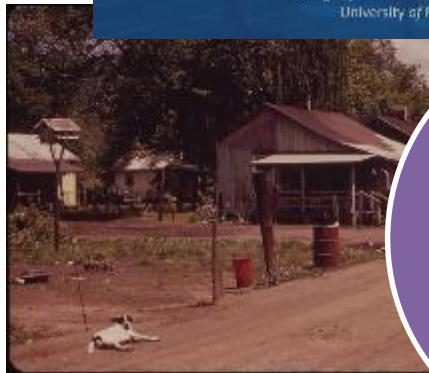
Understanding Racial Inequity in Alachua County

(January, 2018)

Hector H. Sandoval

Bureau of Economic and Business Research (BEBR)
Department of Economics

College of Liberal Arts and Sciences
University of Florida



Housing
Shortage,
Income and
Social
Disparities

*Climate
Crisis*



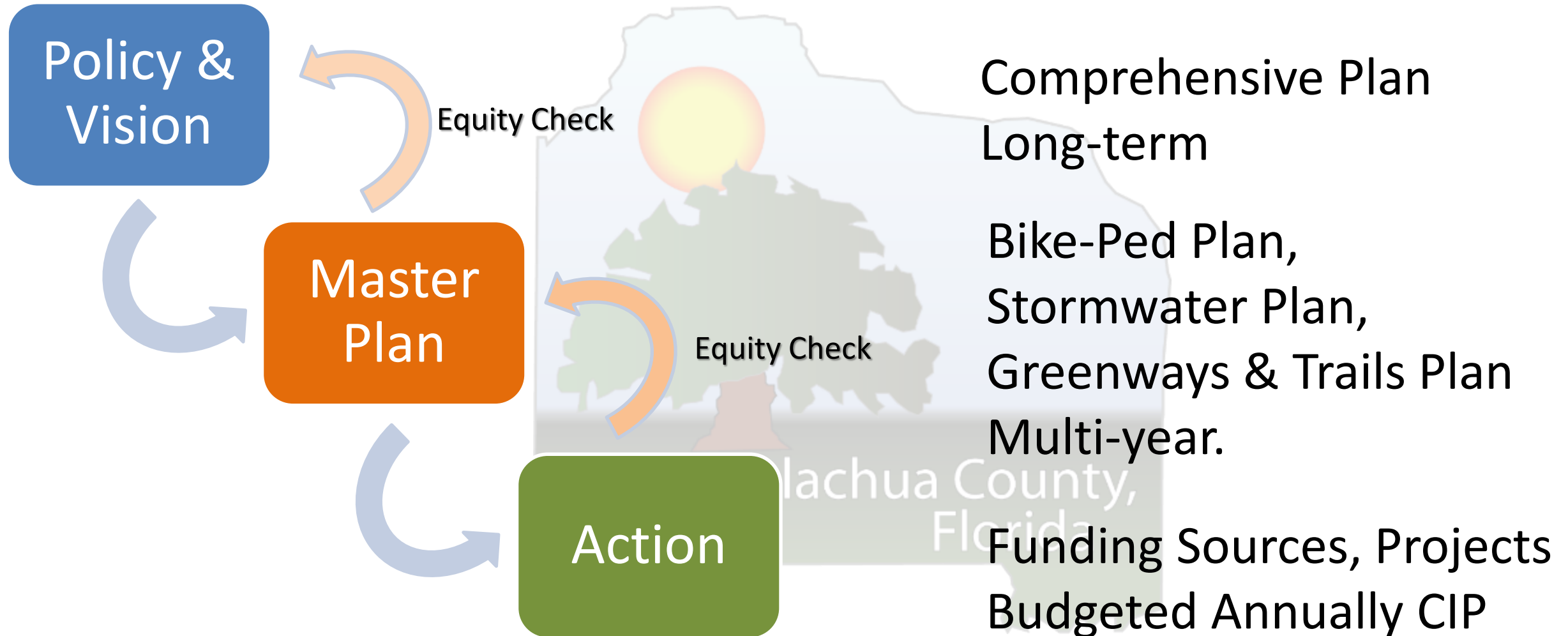
Extreme
Weather,
Flood, Drought,
Wildfire



Policy Lens Categories



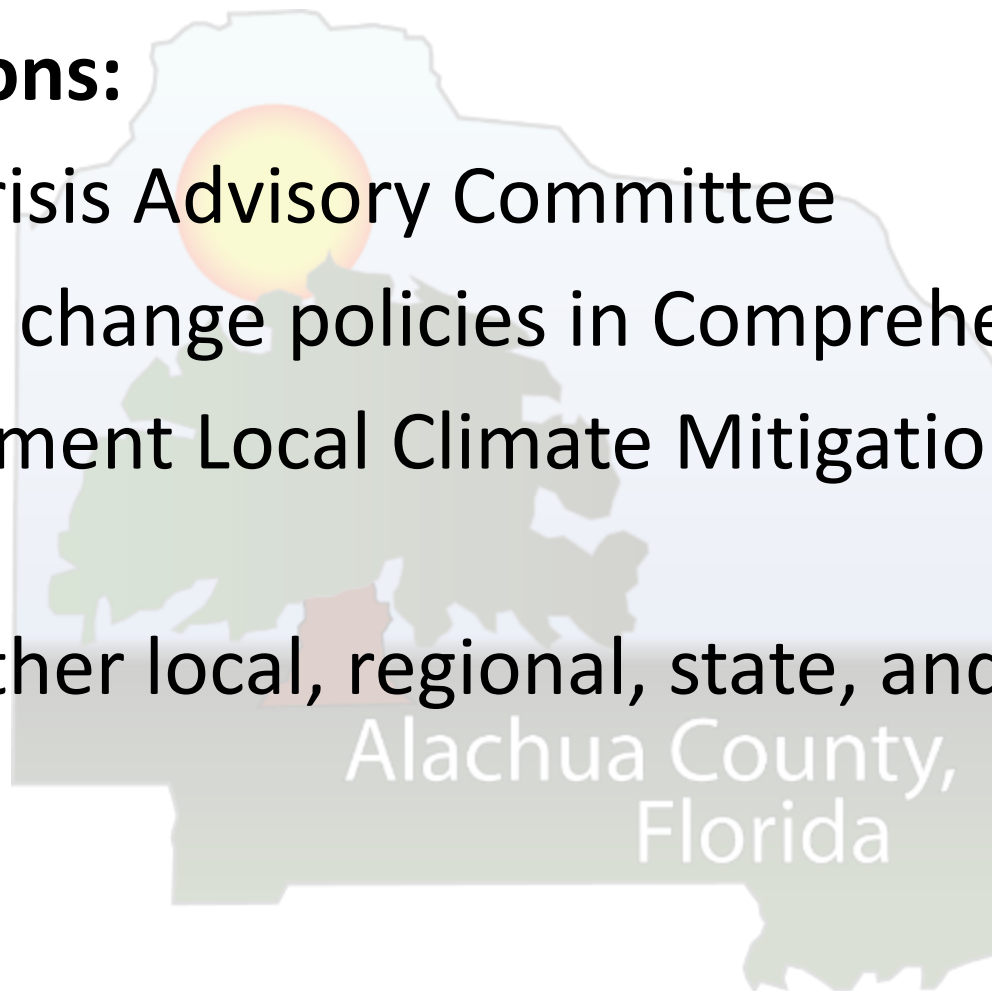
From Policy to Action with Equity Checks



Next Steps

Staff recommendations:

- Create a Climate Crisis Advisory Committee
- Strengthen climate change policies in Comprehensive Plan
- Develop and implement Local Climate Mitigation and Resilience Plan
- Collaborate with other local, regional, state, and federal initiatives



Climate Mitigation and Resilience Plan

Climate Action Plan:

- Climate Vulnerability Assessment
- Mitigation Plan: paths to reduce or eliminate carbon footprint
- Resilience Plan:
 - Plan for foreseeable change
 - Emphasize nature-based strategies
- Inform future updates to Comprehensive Plan

