




**Gainesville.**  
Citizen centered  
People empowered

# Alachua and Gainesville Zero Waste Plan Baseline Assessment

Gus Olmos, Alachua County  
Mike Heimbach, City of Gainesville

# What is Zero Waste ?

The term Zero Waste is defined by the Zero Waste International Alliance (ZWIA) as: “The conservation of all resources by means of responsible production, consumption, reuse, and recovery of products, packaging, and materials without burning and with no discharges to land, water, or air that threaten the environment or human health.”



# What is a Circular Economy ?

1. Production
2. Reduction
3. Reuse & Repair
4. Recycling and Composting




# Zero Waste Solutions



# Alachua County

## **Residential**

- Curbside collection includes garbage, dual-stream recycling, bulk items and yard waste.
  - Garbage cart sizing is currently a Pay-As-You-Throw rate structure
  - Recycling is required for all multi-family units and must be coordinated by the building manager through private services.
  - Subscription only, Rural Collection Centers (RCCs) or the Leveda Brown Environmental Park.
- 

# Alachua County

Municipalities offering single stream curbside collection include the Cities of Alachua, Archer, Hawthorne, La Crosse, Micanopy, and Newberry.


## **Commercial**

- Businesses in the County are required to recycle the following materials: steel cans, aluminum cans, glass containers, plastic containers, magazines, newspapers, office paper, corrugated cardboard.



# Gainesville

## **Residential**

- Curbside collection includes garbage, dual-stream recycling, bulk items and yard waste.
  - Garbage cart sizing is currently a Pay-As-You-Throw rate structure  
Yard waste pickup is encouraged in reusable cans or brown paper bags.
  - Recycling is required for all multi-family units and must be coordinated by the building manager through private services.
- 

# Gainesville

## **Commercial**

- Commercial generators must separate the following designated recycling materials and hire contract recycling services for any item comprising over 15% of their waste stream: corrugated cardboard and pasteboard, newspaper, magazines, catalogs, manuals, paperback books, office paper, junk mail, metal cans, glass bottles and jars, plastic bottles, jugs, jars and tubs, milk and juice cartons.



# Community Resources

## **Organic Waste**

- UF Student Compost Cooperative
- Beaten Path Compost
- Gaston's Tree Debris Removal
- Watson C & D

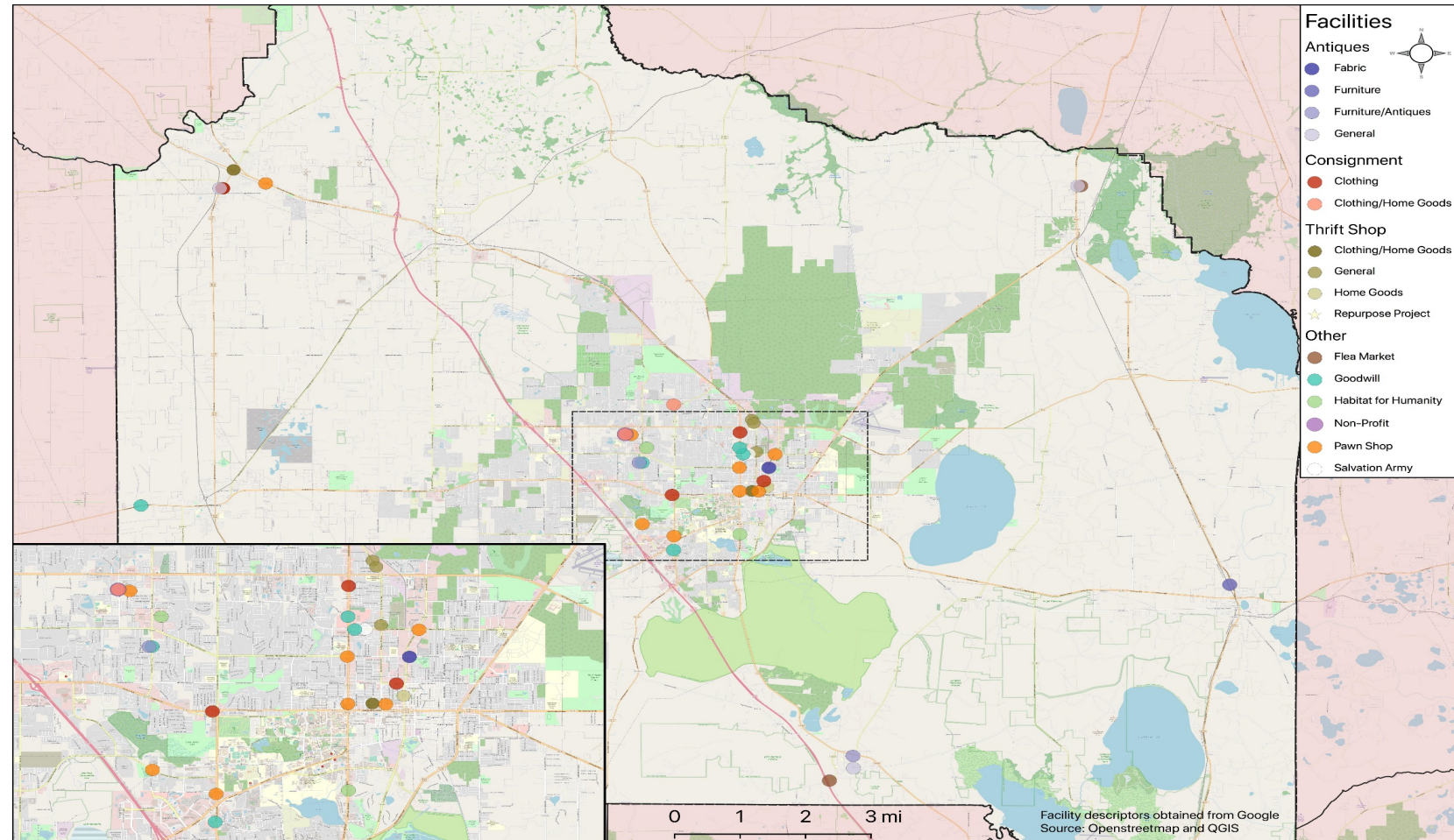
## **Construction and Demolition**

- Florence Recycling & Disposal
- Florida Concrete Recycling, Inc.
- Habitat for Humanity ReStore
- Arwood Waste Management Solutions
- The Repurpose Project – Reuse Store
- Watson Greener Landscaping



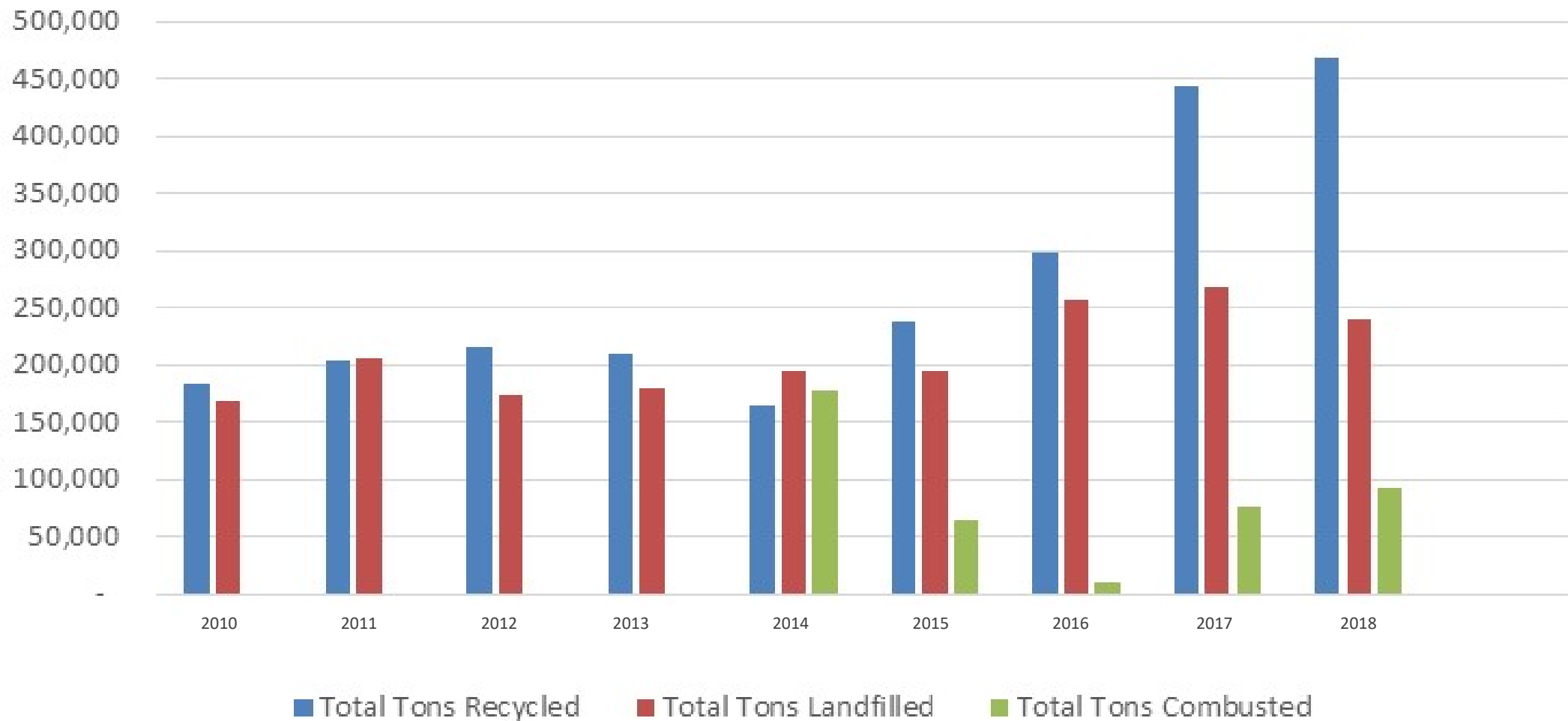
# Reuse Opportunities in Alachua County

Antique  
Flea Markets  
Pawn Shops  
Non-Profit  
Consignment  
Thrift Stores  
Rural Collection Centers  
Hazardous Waste Facility  
Craigslist  
Facebook Marketplace  
Curbside Donations



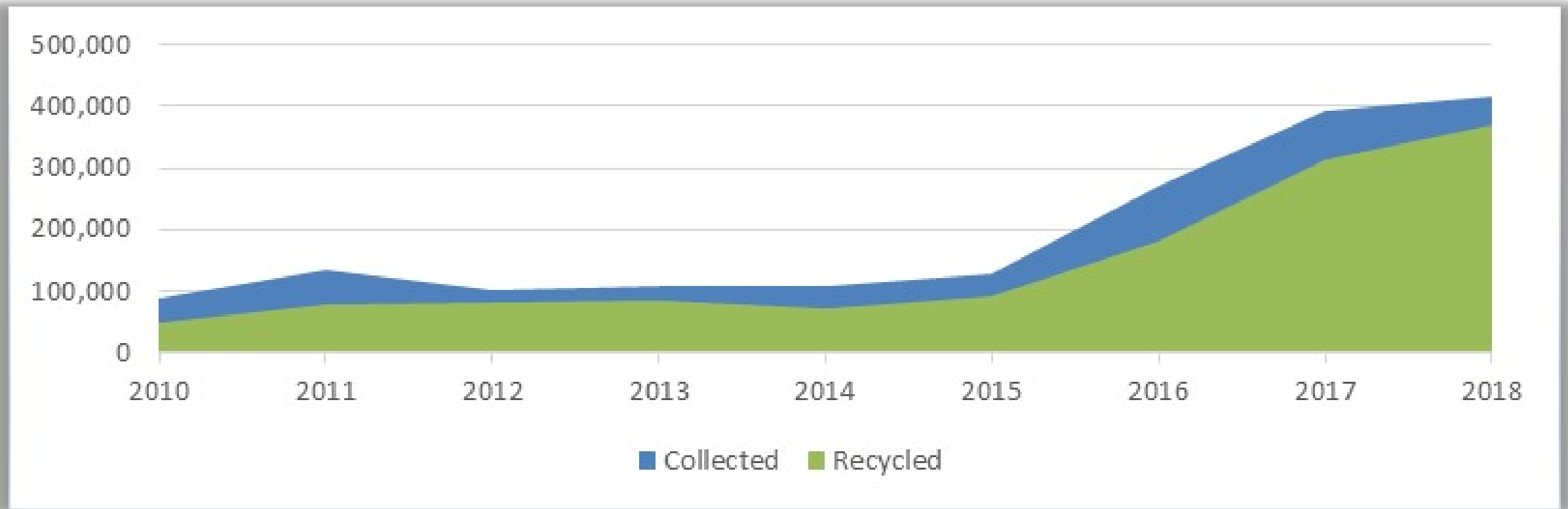
# Municipal Solid Waste Trends

(2010 – 2018)



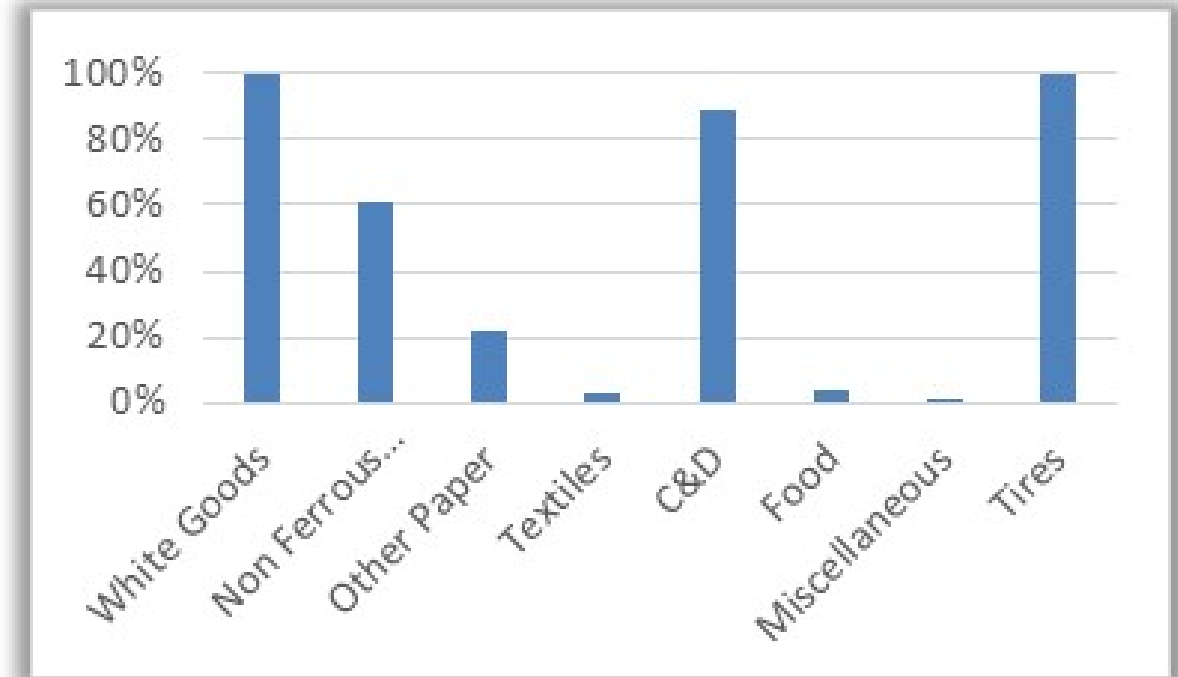
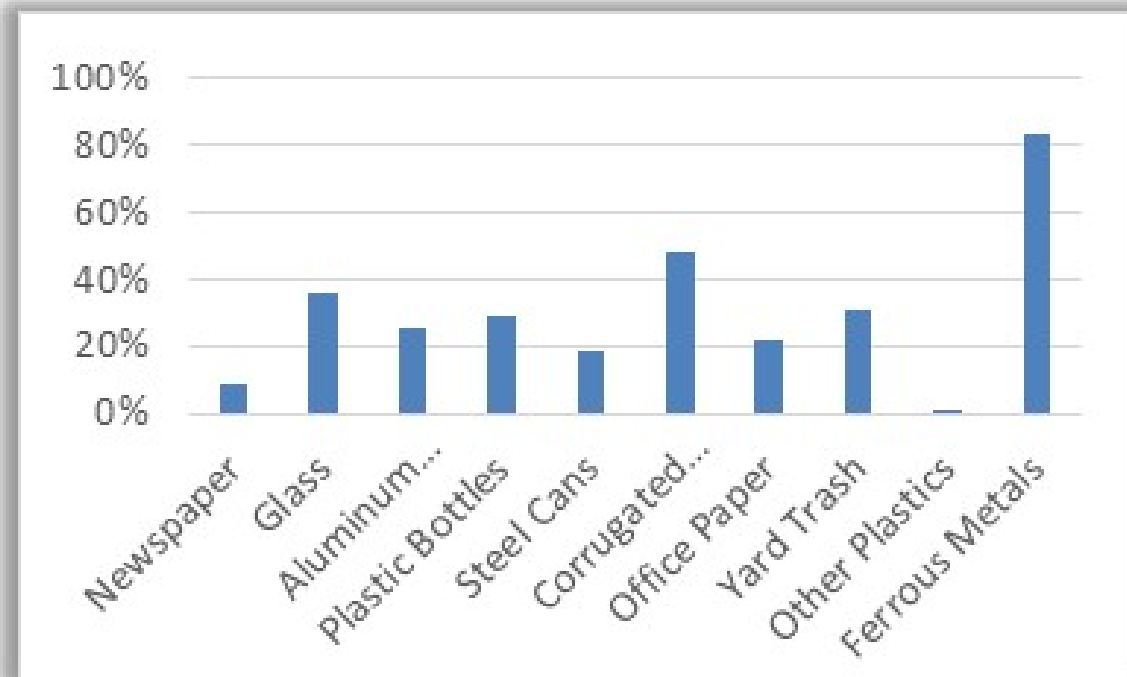
# Construction and Demolition Waste Trends

(2010 -2018)



# Recycling Trends by Commodity

(2010-2018)



# EPA Managing and Transforming Waste Streams

## Appendix I

Zero Waste Plan

Green Procurement

C&D Diversion Requirements

Materials Exchange

Outreach & Education

Recyclables

Product & Packing Bans

Composting

Food Waste

Social Marketing



# Next Steps...

- Waste Composition Study (2020)
- Zero Waste Strategies Report
  - Stakeholder Input
  - Recommend Strategies & Timeline
  - Final Report to City and County Commissions

