

Legistar #200637

01 FEBRUARY 2021

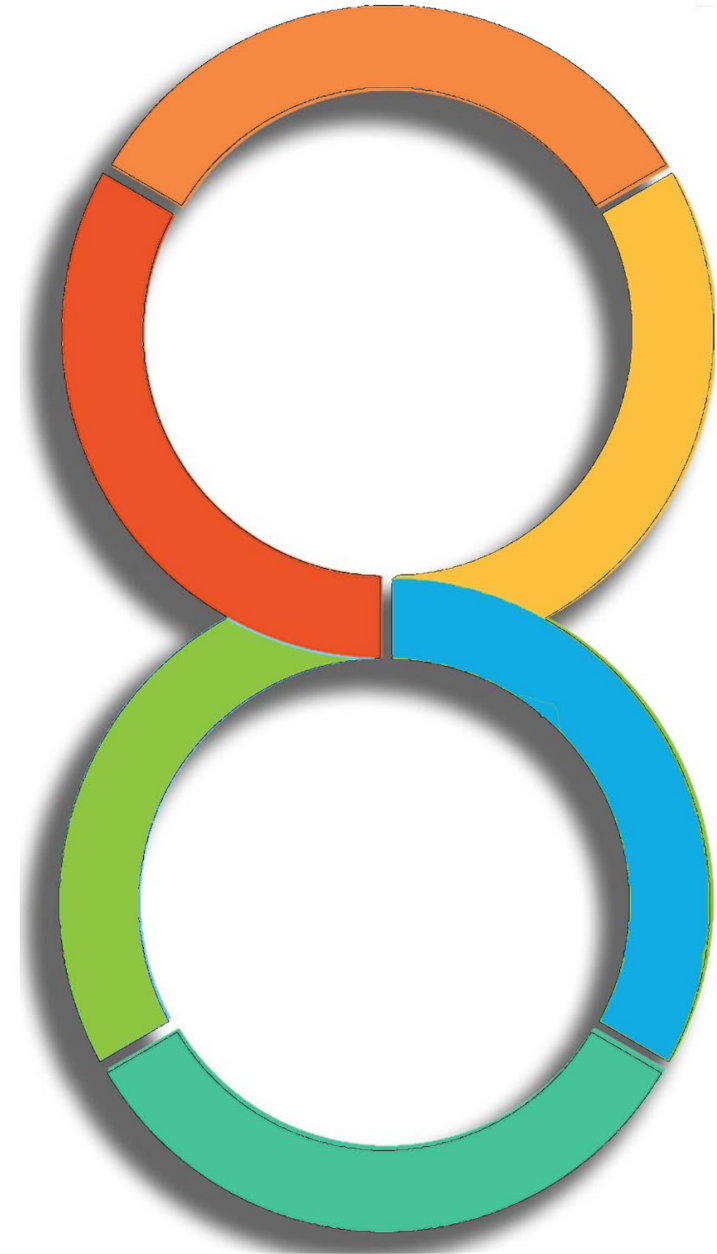
# Infinity Line Update

Gainesville Community Reinvestment  
Area Advisory Board

Dan Gil, GCRA Project Manager

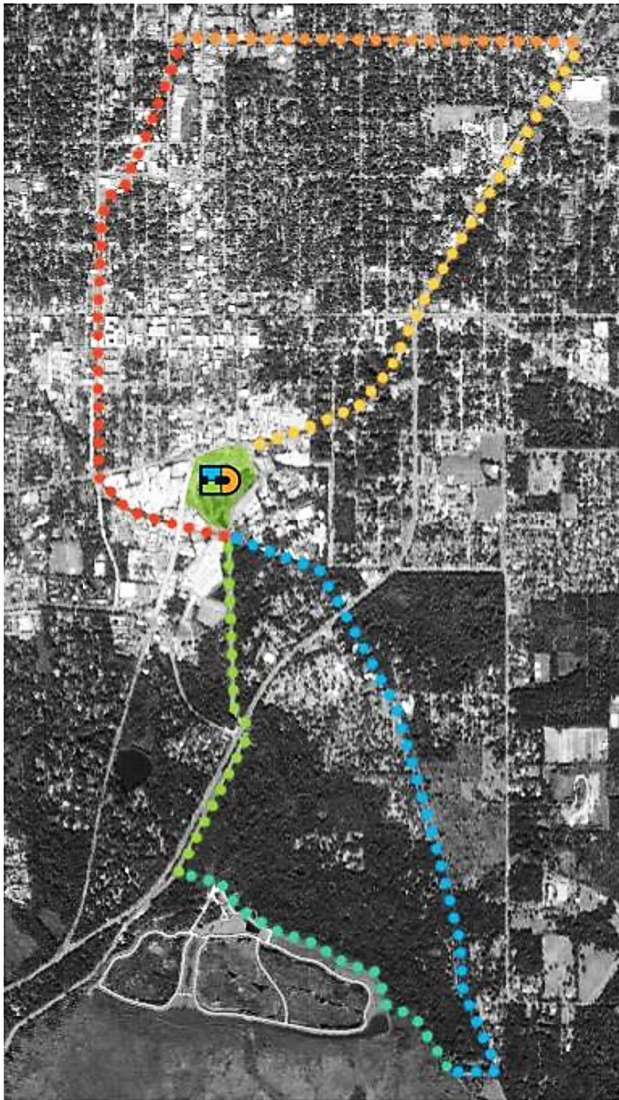


Gainesville  
Community  
Reinvestment  
Area



# Scope & Focus

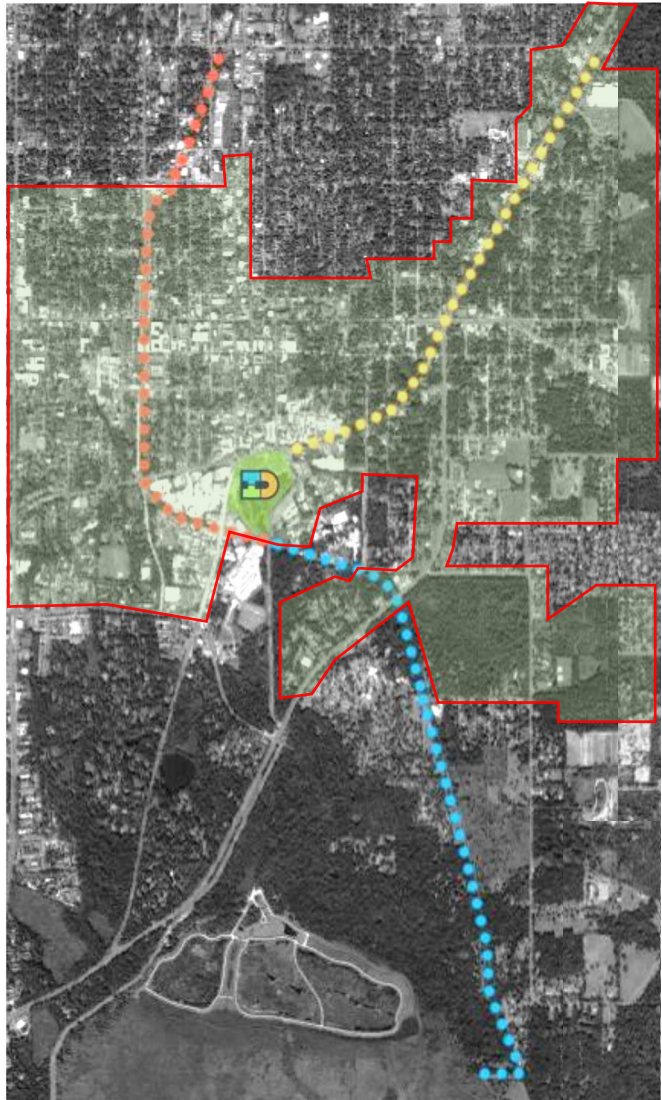
Proposed Trails



Existing Trails

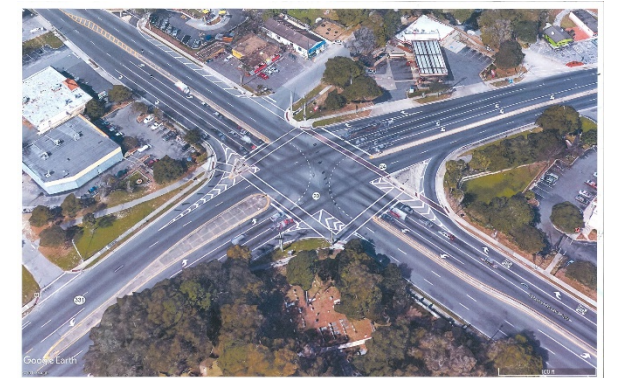


Trails within GCRA District





# Scope & Focus - Existing





# Scope & Focus - Proposed



## **Next Steps**

### Waldo Road Planning Study

- Traffic/Trail Study (16<sup>th</sup> Ave – University Ave)
- Road Redesign Options (FDOT Complete Streets Manual)
- Roundabouts – 16<sup>th</sup> Ave, 8<sup>th</sup> Ave, & University Ave
- Pedestrian Connector Bridge/Eastside Gateway

# Partnerships

## Internal

- Public Works
- Department of Mobility
- CAPER
- PRCA (Wild Spaces Public Places)

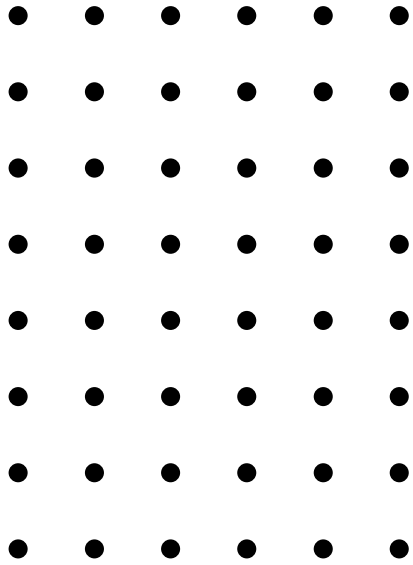
## External

- County
- FDOT

# **Recommendation**

GCRA Director to the GCRA Advisory Board: Hear update from Staff





**Thank you!**

