

**LEGISTAR**

**NO.**

**200560**

# MOC

## MOBILE OUTREACH CLINIC

APRIL



2021

**UF** | College of Medicine  
UNIVERSITY of FLORIDA





# What is MOC?

**1**

The Mobile Outreach Clinic is a primary care medical practice that delivers health care to medically underserved.

**2**

In addition to medical services, we also connect our patients to needed social services.

**3**

MOC is an immersive educational experience for our staff, volunteers, and patients.

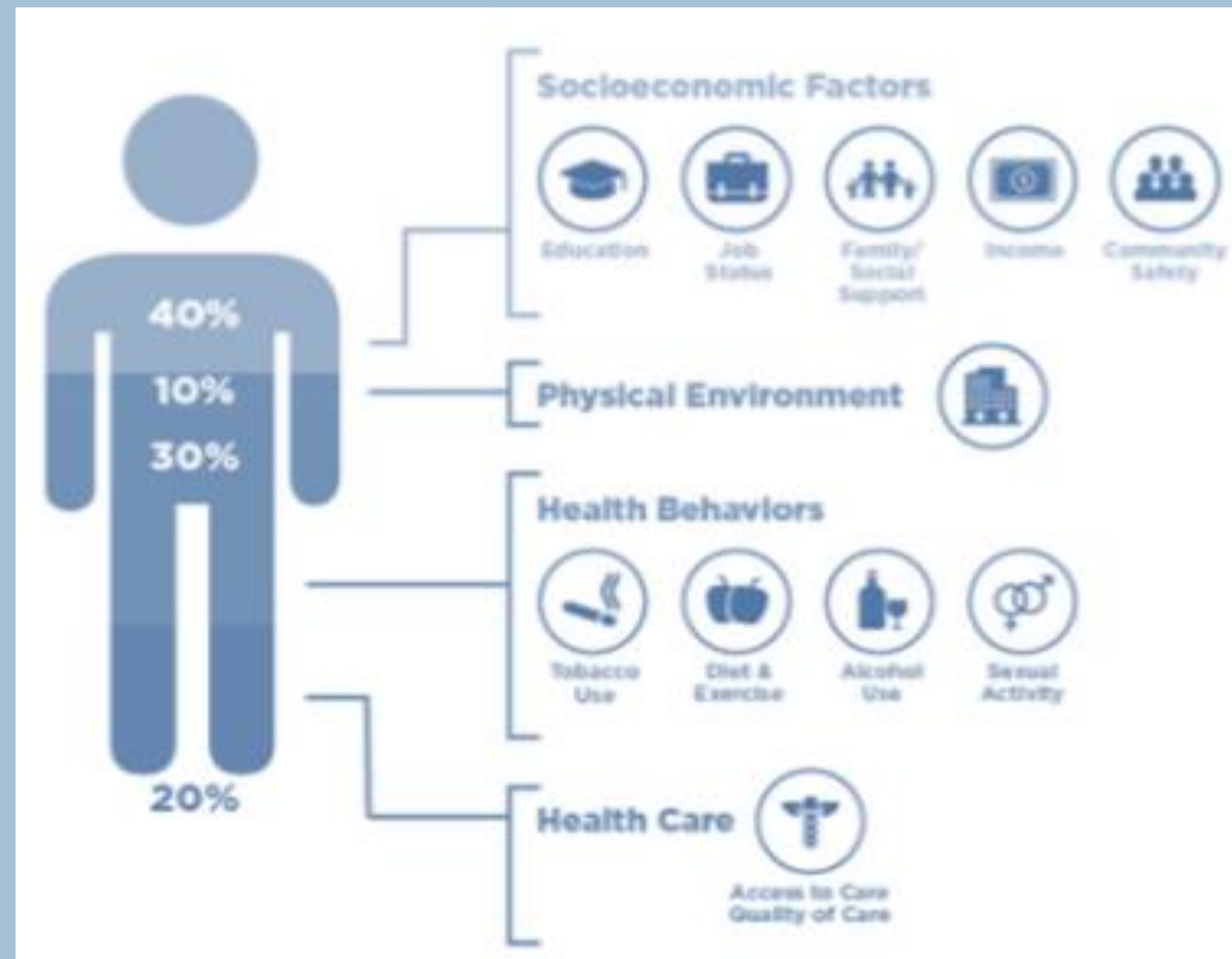
# What does MOC do?

Care Coordination/Case Management

- The Care Coordination program connects patients with needed community resources
- Care Coordinators focus on the Social Determinants of Health (SDOH), i.e. Barriers to Care



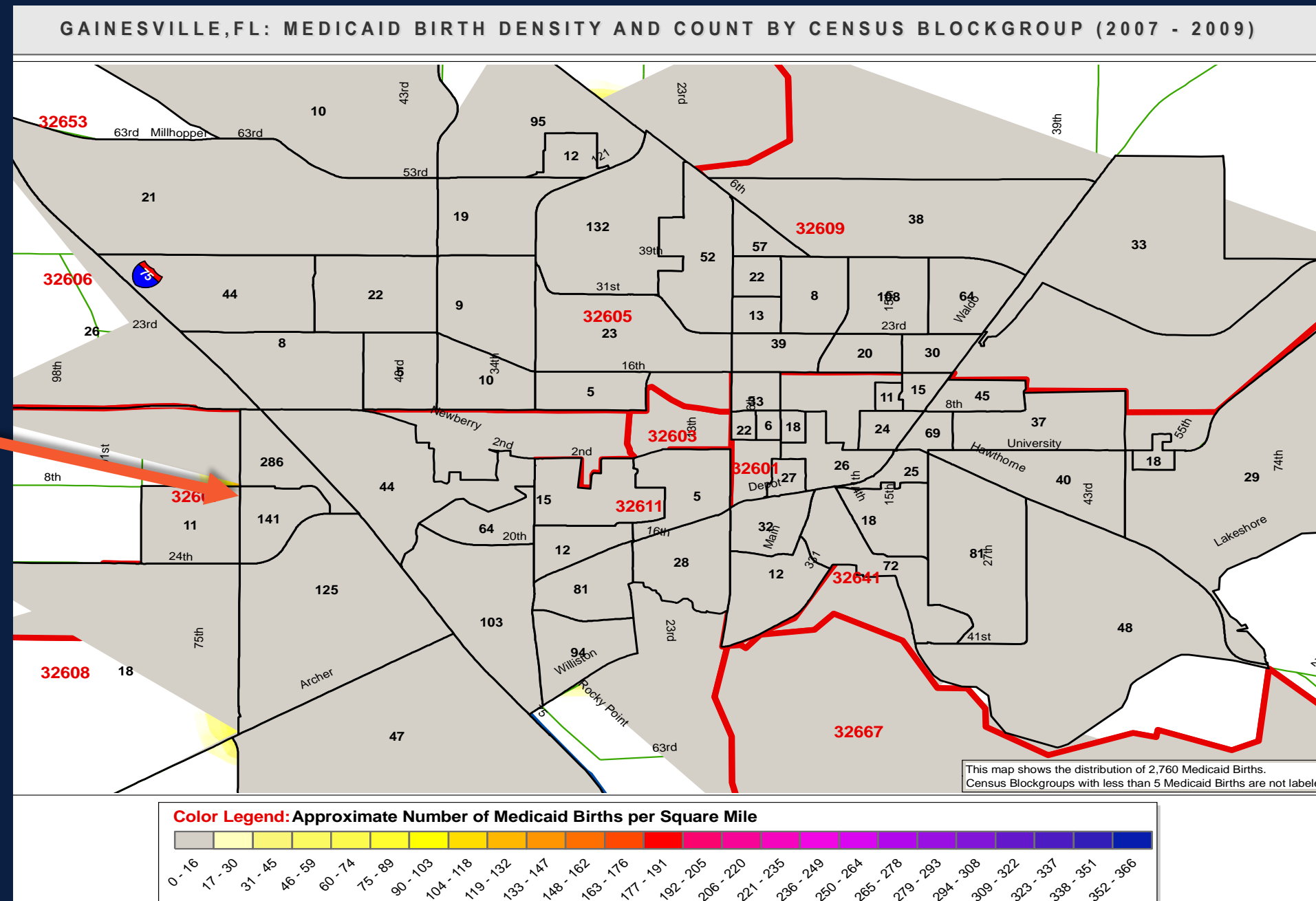




# SDOH Informed Care

- Health is made up of several factors.
- Only 20% of health and wellbeing is through health care
- Care Coordinators focus on the other 80%

# Grassroots Advocacy Leads to County Level Change



# Grassroots Advocacy Leads to County Level Change



- What was once a 2 hour bus trip is now a 2 minute walk



# Grassroots Advocacy Leads to County Level Change





# Grassroots Advocacy Leads to County Level Change



- Jon DeCarmine, Harvey Rohlwing and Grant Harrell: Community partnerships at GRACE are bright spot in pandemic





# Other Examples of Outreach



## YOU BEST YOU

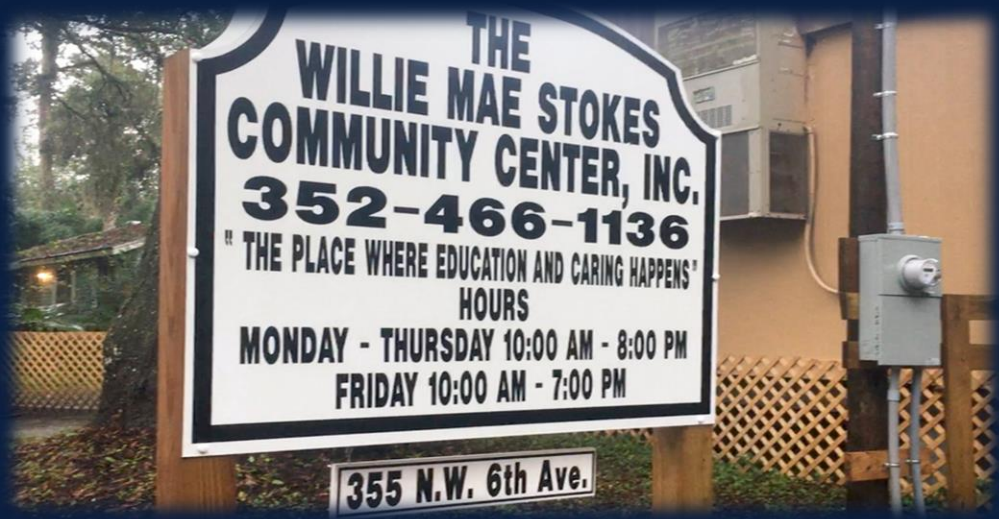
BASIC EFFECTIVE STRATEGIES TO TRANSFORM YOU INTO YOUR *BEST YOU*!

A 6-week course designed to help you, your neighbors and friends live a better life by giving you the strategies and tools to do so.

Ease your stress	Reflect
Make goals	Find easy & cheap ways to exercise
Learn how to talk to your doctor	Problem solve
Treat yourself	Make foods you enjoy better for you

All we need is a person from your community who is willing to host the course, and invite family members, friends or neighbors to participate... We do the rest! Plus, we bring food 🍷

Call (352) 273-5329 to sign up as a host or find a course near you!



THE UF MOBILE OUTREACH CLINIC PRESENTS A

## "BACK TO SCHOOL" HEALTH EVENT

Bring your kids for school physicals, vaccines and health screenings before the start of the school year!

THURSDAY | AUGUST 1ST  
1:00PM - 5:30PM  
LIBRARY PARTNERSHIP | 912 NE 16 AVE

Patients will be seen on a first come, first serve basis  
If you have any questions please call 352 273 5329



# Specific Benefits of Mobile Outreach



- Flexibility
- Visibility
- Cost Effectiveness
- Sparks Interest





# Questions and Contact Info

UF Mobile Outreach Clinic  
PO BOX 100249  
Gainesville, FL 32610

(352) 273-5329

<https://outreach.med.ufl.edu/>

