



Regional Water Supply Planning

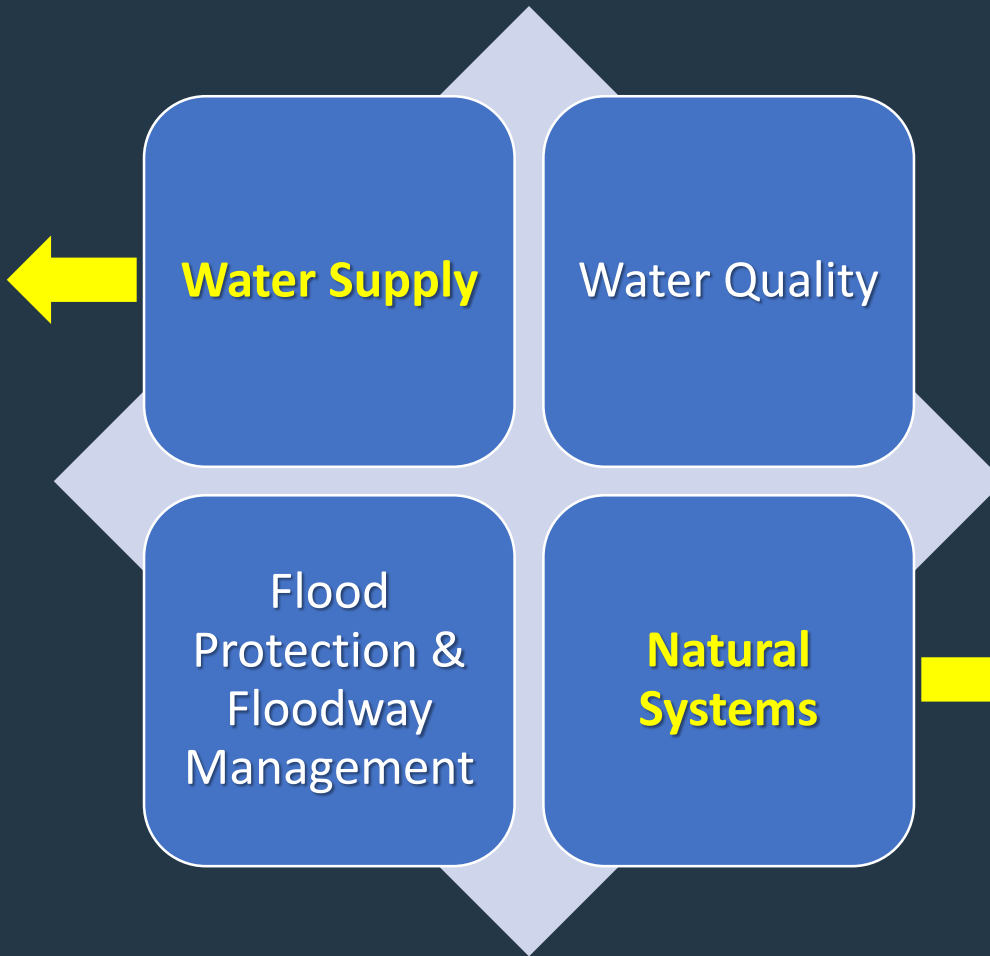


Amy Brown
Chief, Office of Water Supply
Suwannee River Water Management District
Amy.Brown@srwmd.org

Water Management District Core Missions



- **Planning**
- **Permitting**



**Minimum Flows
and Minimum
Levels**



Water Supply Planning

Why Plan?

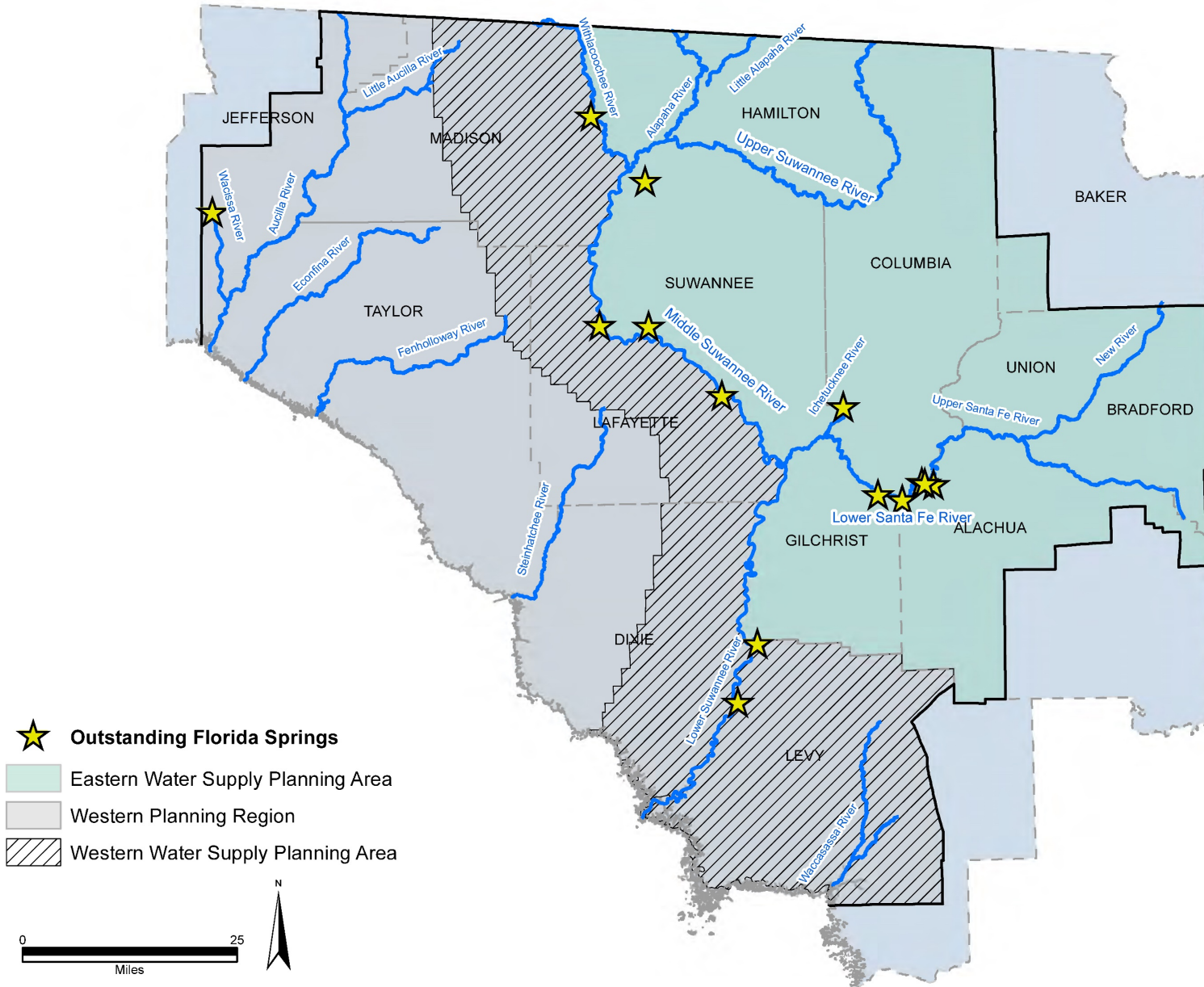
- Required by statute
- Provides a regional picture of projected growth
- Provides a regional evaluation of the potential influence of future water demand on natural systems
- Ensures options exist to meet projected future water demands and while sustaining natural systems
- Informs decision making by the District and state agencies, including project options for water supply

SRMWD Planning Objectives

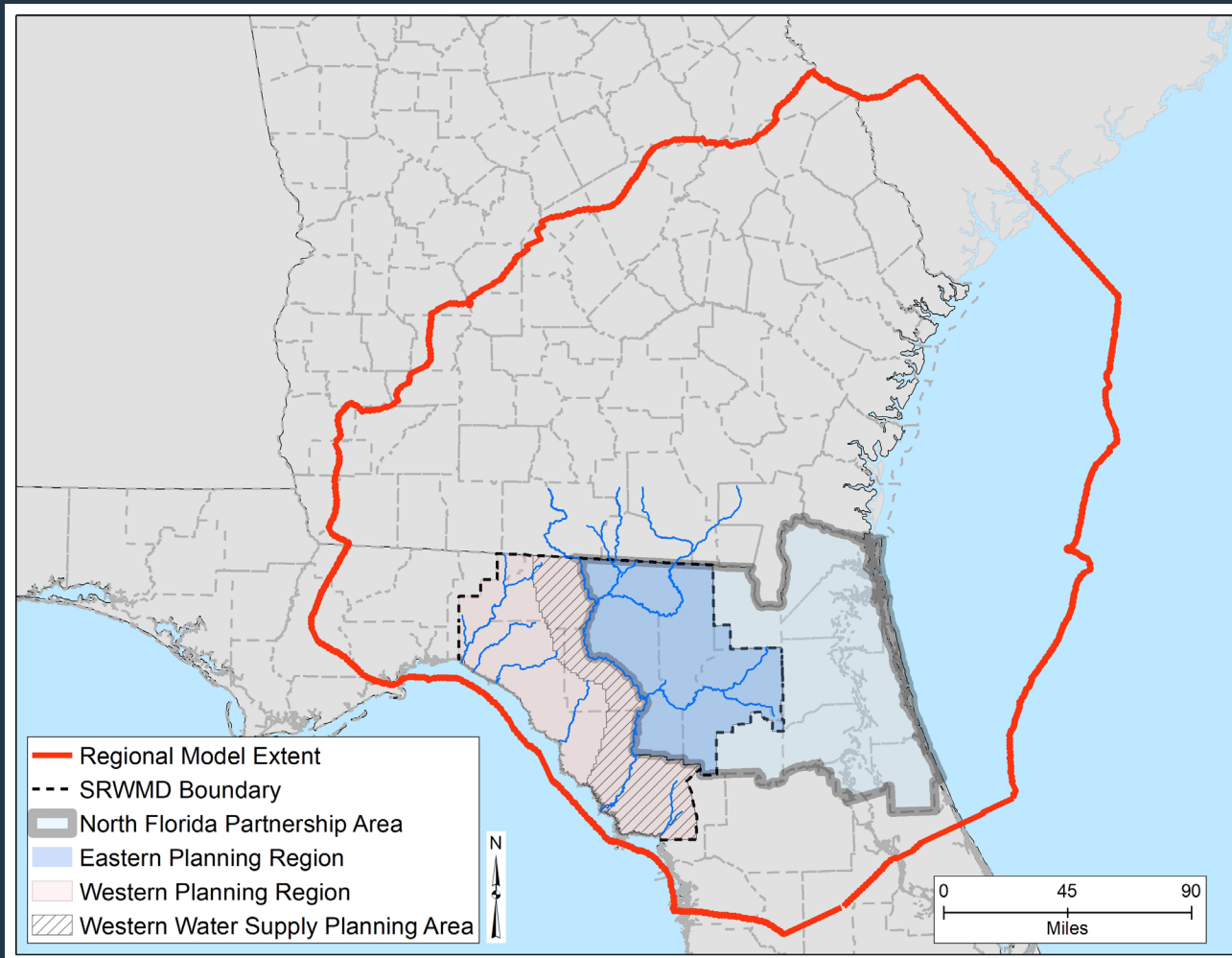


- Develop an updated picture of regional water demand
- Develop the Western Water Supply Assessment and Plan (2020-2045)
- Update the North Florida Regional Water Supply Plan (2020-2045) in collaboration with SJRWMD
- Targeted completion is 2022 for these plans

SRWMD Planning



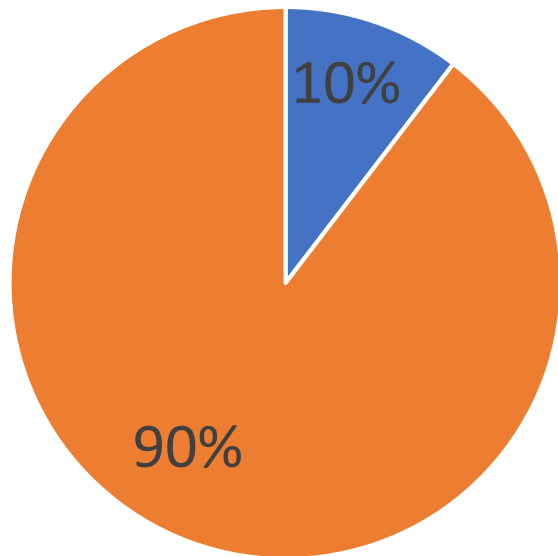
Regional Planning



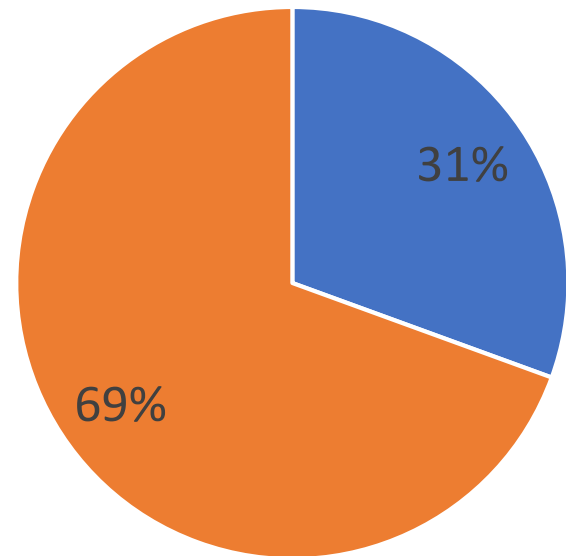
North Florida Partnership Area



Population ~2 million



- Eastern Planning Region - SRWMD
- Region 1 - SJRWMD



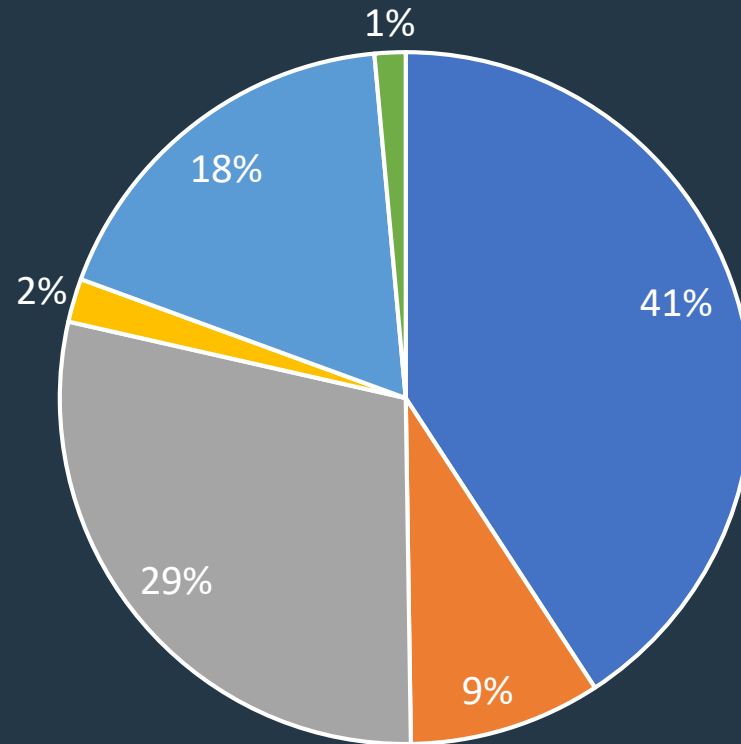
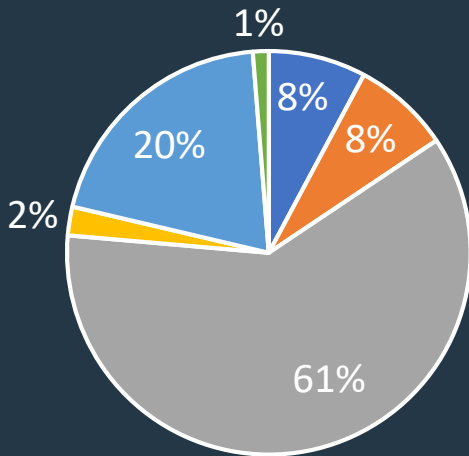
- Eastern Planning Region - SRWMD
- Region 1 - SJRWMD

Based on 2015 estimates

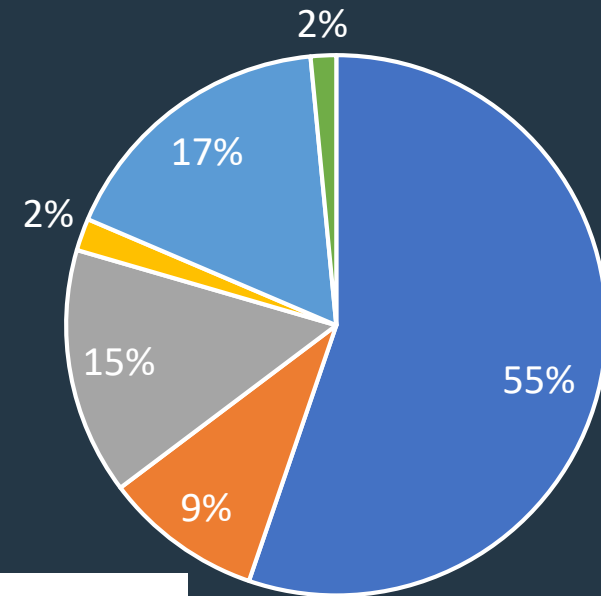
2015 Groundwater Use



Eastern Planning Region
SRWMD

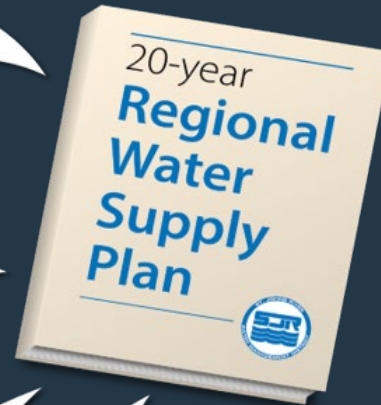


Region 1
SJRWMD



- Public Supply
- Domestic Self-supply and Small Public Supply Systems
- Agricultural Irrigation Self-supply
- Landscape/Recreational/Aesthetic Self-supply
- Commercial / Industrial / Institutional Self-supply
- Thermoelectric Power Generation Self-supply

Components of a Regional Water Supply Plan



- Water demand estimates
- Projected future demands
- Water resource assessment
- Conservation potential
- Water source options
- Water supply and

North Florida Regional Water Supply Plan Timeline



2021

- **Spring-Summer:** Compile draft regional water use and projected future demands (2020-2045)
- **Summer:** Release draft regional water use estimates and projections for stakeholder review
- **Late Summer:** Incorporate stakeholder comments and finalize water demand projections
- **Fall-Winter:** Begin assessment of potential water resource constraints

North Florida Regional Water Supply Plan Timeline



2022

- **Spring:** Solutions and projects
- **Summer:** Plan development and stakeholder review
- **Fall:** Plan approval

Additional Information:

- northfloridawater.com
- Sign up to be added to the notification list for upcoming plan milestones



Questions ?

More Information:
northfloridawater.com
Partnership@sjrwmd.com

**Water for Nature,
Water for People.**

