

# Water Supply Planning

Joint Water and Climate Policy Board  
June 14, 2021

Item #210075

Rick Hutton, PE  
Supervising Engineer



# GRU Water/Wastewater

## Water Service

- 200,000 people
  - ~ 3/4 of Alachua County population
- Citizens, UF, SFC, hospitals & businesses

## Water Reclamation

- Receive wastewater from 185,000 people
- Collect, treat and beneficially reuse



Goal: Environmental, Economic and Social Sustainability



# Water Challenges

Expect 40,000 to 50,000 new residents to the region

~ 20-25% population increase over next 20 years

Commitment to stay within current water allocation through 2034

Need to protect springs, lakes and rivers

Must comply with MFLs





# Water Supply/Resource Strategy

Water Supply Planning &  
Collaboration

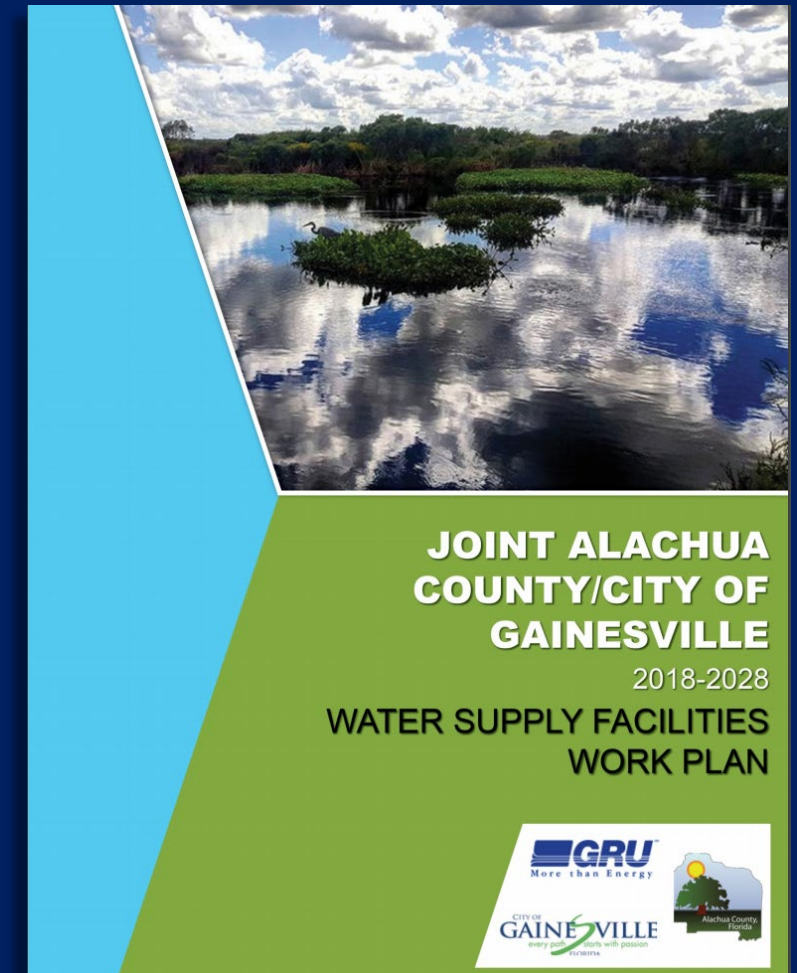
Water Conservation

Water Reuse



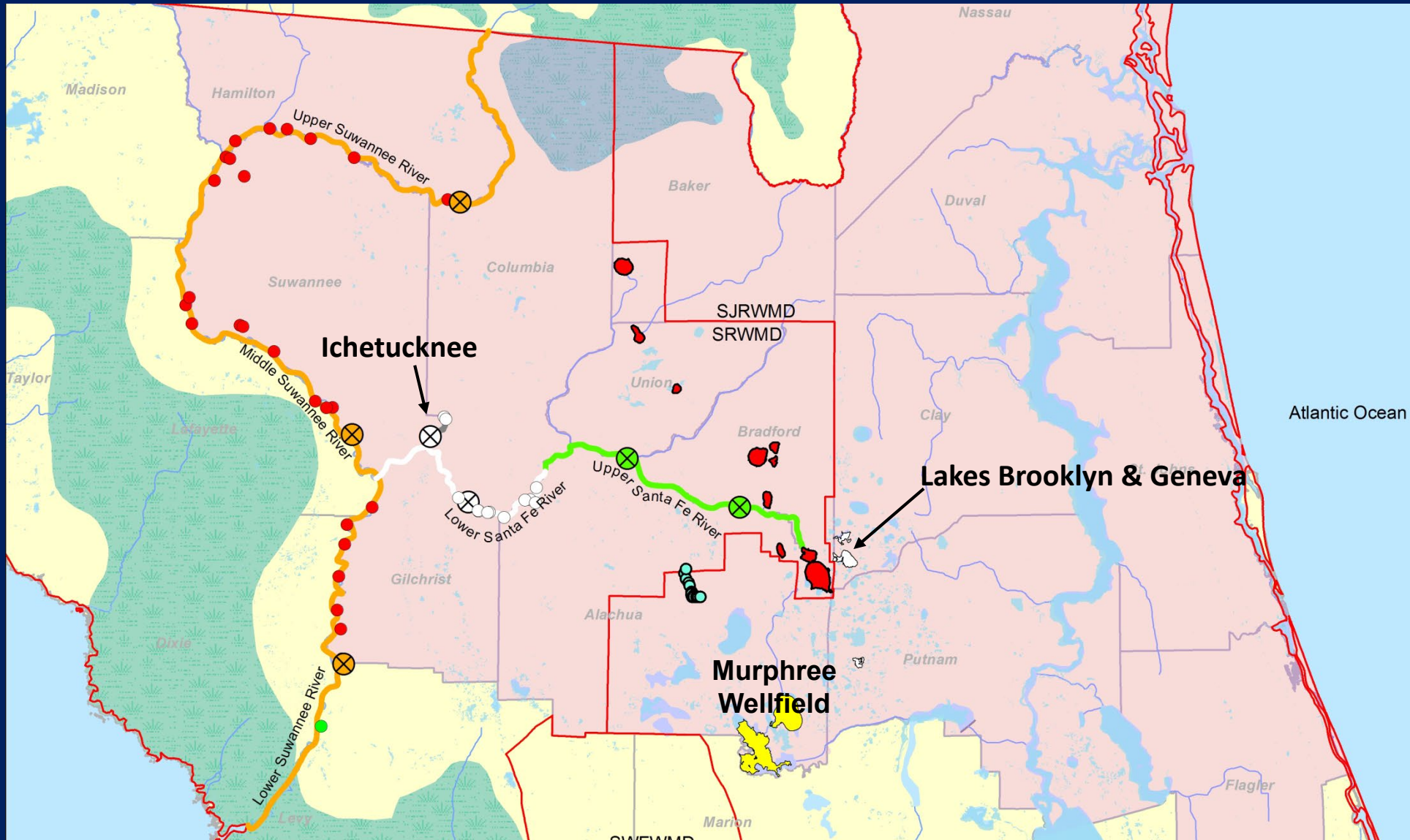
# Coordination, Collaboration & Partnerships

- 2015-2035 North Florida Regional Water Supply Plan
- Joint Alachua County/City of Gainesville 2018-2028 Water Supply Facilities Work Plan
- WMD Cost-share Programs
- Research Participation
- Collaboration Workshops
- Suwannee River Partnership





# Current and Future MFLs in North Florida Region



# GRU Strategy for Meeting MFLs

- Participate w/ SRWMD & SJRWMD & other stakeholders in
  - MFL Development
  - MFL Recovery Strategies
- Support solutions that are:
  - Science based
  - Reasonable & Implementable
  - Equitable



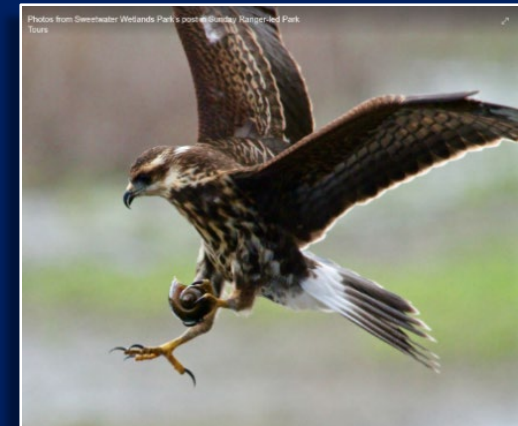
# GRU Strategy for Meeting MFLs

- Water Conservation and Reuse
- Aquifer Recharge
- Participate in regional projects as needed in a manner that is equitable, reasonable, and proportional to impacts from pumping needed to serve our customers



# Groundwater Recharge Wetland

- Cost share partnership with Suwannee River Water Management District and FDEP
- Alachua County partnering to provide public access/park facilities & operate as County park
- Aquifer recharge of 3 million gallons per day to be built out to 5 million gallons per day



# Groundwater Recharge Wetland

- Help to address Santa Fe & Ichetucknee MFLs
- \$12 million cost
- Property has been purchased (75 ac)
- Completion in 2024



CHW  
Professional Consultants

GRU  
More than Energy

GRU WETLAND PARK



# Contact Information



Rick Hutton, PE  
Supervising Utility Engineer  
GRU Water/Wastewater  
[huttonrh@gru.com](mailto:huttonrh@gru.com)