

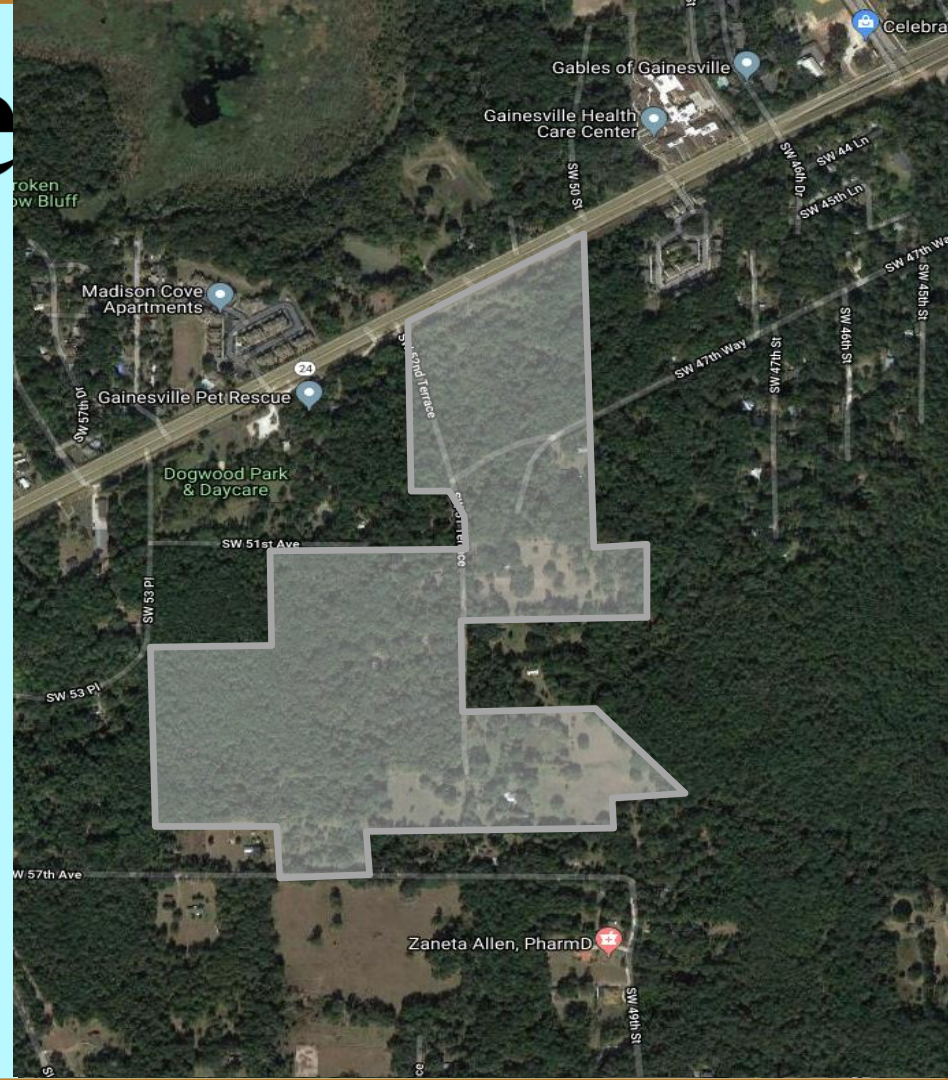


City of Gainesville

*City Commission Meeting:
June 3, 2021*

Petition CC-21-46 SUB. EDA, Inc. (Sergio Reyes), agent for Oaks Preserve Parcel Owners. Final plat review for 76 lots on 19.77 acres, Oaks Preserve Cluster Subdivision, Phase 1, located in the 5200 Block of Archer Road, south side. Zoned: RSF-4 (single-family residential 8 dwelling units per acre). (Related to Legislative Mater # 171022 and Petition DB-18-17 SUB)

***Final Plat Review for Oaks Preserve
Cluster Subdivision, Phase 1
Legistar # 210002.***



SW Archer Road

SW 47th Way

PROPOSED GRADE
TOP EL. = 74.00
BOTTOM EL. = 73.00
CRITICAL EL. = 73.50 (100ft+240ft)

PROPOSED GRADE
TOP EL. = 73.00
BOTTOM EL. = 72.00
CRITICAL EL. = 72.50 (100ft+240ft)

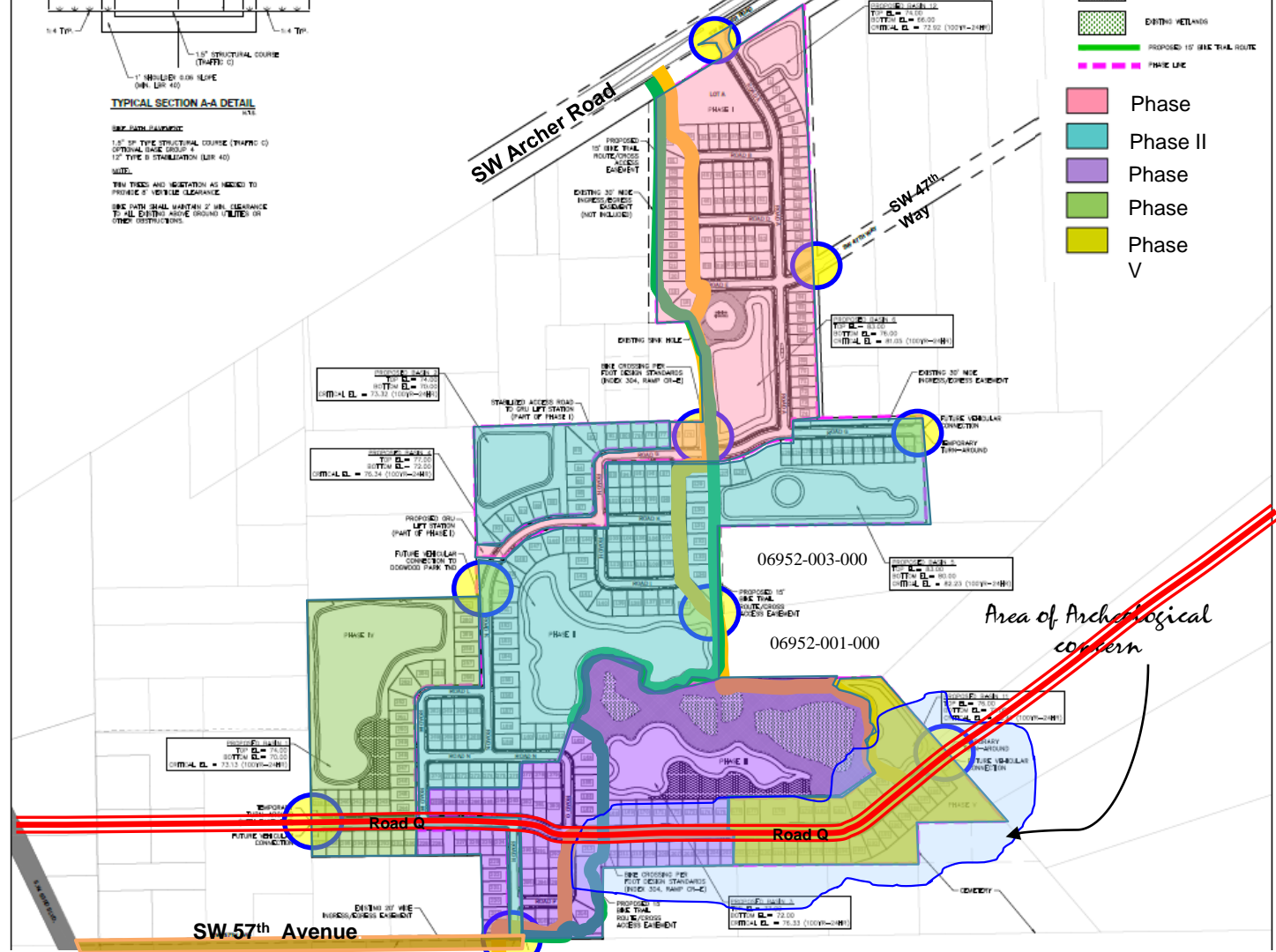
PROPOSED GRADE
TOP EL. = 81.00
BOTTOM EL. = 78.00
CRITICAL EL. = 79.50 (100ft+240ft)

PROPOSED GRADE
TOP EL. = 81.00
BOTTOM EL. = 78.00
CRITICAL EL. = 79.50 (100ft+240ft)

PROPOSED GRADE
TOP EL. = 81.00
BOTTOM EL. = 78.00
CRITICAL EL. = 79.50 (100ft+240ft)

PROPOSED GRADE
TOP EL. = 77.00
BOTTOM EL. = 75.00
CRITICAL EL. = 76.50 (100ft+240ft)

SW 57th Avenue



OAKS PRESERVE PHASE I, A CLUSTER SUBDIVISION

SITUATED IN SECTION 22, TOWNSHIP 10 SOUTH, RANGE 19 EAST, CITY OF GAINESVILLE, ALACHUA COUNTY, FLORIDA

PLAT BOOK _____ PAGE _____
SHEET 1 OF 1

Chain	Link	Angle	Dist	Bearing	Dist from
12	88°02'37"	88.00	81.00	S 88.00° E	0.00
13	2°00'00"	2.00	16.17	N 88.02° E	81.00
14	7°14'14"	7.24	27.60	S 88.02° E	16.17
15	7°14'14"	7.24	27.60	S 88.02° E	27.60
16	7°14'14"	7.24	27.60	S 88.02° E	55.20
17	7°14'14"	7.24	27.60	S 88.02° E	82.80
18	7°14'14"	7.24	27.60	S 88.02° E	110.40
19	7°14'14"	7.24	27.60	S 88.02° E	138.00
20	7°14'14"	7.24	27.60	S 88.02° E	165.60
21	7°14'14"	7.24	27.60	S 88.02° E	193.20
22	7°14'14"	7.24	27.60	S 88.02° E	220.80
23	7°14'14"	7.24	27.60	S 88.02° E	248.40
24	7°14'14"	7.24	27.60	S 88.02° E	276.00
25	7°14'14"	7.24	27.60	S 88.02° E	303.60
26	7°14'14"	7.24	27.60	S 88.02° E	331.20
27	7°14'14"	7.24	27.60	S 88.02° E	358.80
28	7°14'14"	7.24	27.60	S 88.02° E	386.40
29	7°14'14"	7.24	27.60	S 88.02° E	414.00
30	7°14'14"	7.24	27.60	S 88.02° E	441.60
31	7°14'14"	7.24	27.60	S 88.02° E	469.20
32	7°14'14"	7.24	27.60	S 88.02° E	496.80
33	7°14'14"	7.24	27.60	S 88.02° E	524.40
34	7°14'14"	7.24	27.60	S 88.02° E	552.00
35	7°14'14"	7.24	27.60	S 88.02° E	579.60
36	7°14'14"	7.24	27.60	S 88.02° E	607.20
37	7°14'14"	7.24	27.60	S 88.02° E	634.80
38	7°14'14"	7.24	27.60	S 88.02° E	662.40
39	7°14'14"	7.24	27.60	S 88.02° E	690.00
40	7°14'14"	7.24	27.60	S 88.02° E	717.60
41	7°14'14"	7.24	27.60	S 88.02° E	745.20
42	7°14'14"	7.24	27.60	S 88.02° E	772.80
43	7°14'14"	7.24	27.60	S 88.02° E	800.40
44	7°14'14"	7.24	27.60	S 88.02° E	828.00
45	7°14'14"	7.24	27.60	S 88.02° E	855.60
46	7°14'14"	7.24	27.60	S 88.02° E	883.20
47	7°14'14"	7.24	27.60	S 88.02° E	910.80
48	7°14'14"	7.24	27.60	S 88.02° E	938.40
49	7°14'14"	7.24	27.60	S 88.02° E	966.00
50	7°14'14"	7.24	27.60	S 88.02° E	993.60
51	7°14'14"	7.24	27.60	S 88.02° E	1021.20
52	7°14'14"	7.24	27.60	S 88.02° E	1048.80
53	7°14'14"	7.24	27.60	S 88.02° E	1076.40
54	7°14'14"	7.24	27.60	S 88.02° E	1104.00
55	7°14'14"	7.24	27.60	S 88.02° E	1131.60
56	7°14'14"	7.24	27.60	S 88.02° E	1159.20
57	7°14'14"	7.24	27.60	S 88.02° E	1186.80
58	7°14'14"	7.24	27.60	S 88.02° E	1214.40
59	7°14'14"	7.24	27.60	S 88.02° E	1242.00
60	7°14'14"	7.24	27.60	S 88.02° E	1269.60
61	7°14'14"	7.24	27.60	S 88.02° E	1297.20
62	7°14'14"	7.24	27.60	S 88.02° E	1324.80
63	7°14'14"	7.24	27.60	S 88.02° E	1352.40
64	7°14'14"	7.24	27.60	S 88.02° E	1380.00
65	7°14'14"	7.24	27.60	S 88.02° E	1407.60
66	7°14'14"	7.24	27.60	S 88.02° E	1435.20
67	7°14'14"	7.24	27.60	S 88.02° E	1462.80
68	7°14'14"	7.24	27.60	S 88.02° E	1490.40
69	7°14'14"	7.24	27.60	S 88.02° E	1518.00
70	7°14'14"	7.24	27.60	S 88.02° E	1545.60
71	7°14'14"	7.24	27.60	S 88.02° E	1573.20
72	7°14'14"	7.24	27.60	S 88.02° E	1600.80
73	7°14'14"	7.24	27.60	S 88.02° E	1628.40
74	7°14'14"	7.24	27.60	S 88.02° E	1656.00
75	7°14'14"	7.24	27.60	S 88.02° E	1683.60
76	7°14'14"	7.24	27.60	S 88.02° E	1711.20
77	7°14'14"	7.24	27.60	S 88.02° E	1738.80
78	7°14'14"	7.24	27.60	S 88.02° E	1766.40
79	7°14'14"	7.24	27.60	S 88.02° E	1794.00
80	7°14'14"	7.24	27.60	S 88.02° E	1821.60
81	7°14'14"	7.24	27.60	S 88.02° E	1849.20
82	7°14'14"	7.24	27.60	S 88.02° E	1876.80
83	7°14'14"	7.24	27.60	S 88.02° E	1904.40
84	7°14'14"	7.24	27.60	S 88.02° E	1932.00
85	7°14'14"	7.24	27.60	S 88.02° E	1959.60
86	7°14'14"	7.24	27.60	S 88.02° E	1987.20
87	7°14'14"	7.24	27.60	S 88.02° E	2014.80
88	7°14'14"	7.24	27.60	S 88.02° E	2042.40
89	7°14'14"	7.24	27.60	S 88.02° E	2070.00
90	7°14'14"	7.24	27.60	S 88.02° E	2097.60
91	7°14'14"	7.24	27.60	S 88.02° E	2125.20
92	7°14'14"	7.24	27.60	S 88.02° E	2152.80
93	7°14'14"	7.24	27.60	S 88.02° E	2180.40
94	7°14'14"	7.24	27.60	S 88.02° E	2208.00
95	7°14'14"	7.24	27.60	S 88.02° E	2235.60
96	7°14'14"	7.24	27.60	S 88.02° E	2263.20
97	7°14'14"	7.24	27.60	S 88.02° E	2290.80
98	7°14'14"	7.24	27.60	S 88.02° E	2318.40
99	7°14'14"	7.24	27.60	S 88.02° E	2346.00
100	7°14'14"	7.24	27.60	S 88.02° E	2373.60
101	7°14'14"	7.24	27.60	S 88.02° E	2401.20
102	7°14'14"	7.24	27.60	S 88.02° E	2428.80
103	7°14'14"	7.24	27.60	S 88.02° E	2456.40
104	7°14'14"	7.24	27.60	S 88.02° E	2484.00
105	7°14'14"	7.24	27.60	S 88.02° E	2511.60
106	7°14'14"	7.24	27.60	S 88.02° E	2539.20
107	7°14'14"	7.24	27.60	S 88.02° E	2566.80
108	7°14'14"	7.24	27.60	S 88.02° E	2594.40
109	7°14'14"	7.24	27.60	S 88.02° E	2622.00
110	7°14'14"	7.24	27.60	S 88.02° E	2649.60
111	7°14'14"	7.24	27.60	S 88.02° E	2677.20
112	7°14'14"	7.24	27.60	S 88.02° E	2704.80
113	7°14'14"	7.24	27.60	S 88.02° E	2732.40
114	7°14'14"	7.24	27.60	S 88.02° E	2760.00
115	7°14'14"	7.24	27.60	S 88.02° E	2787.60
116	7°14'14"	7.24	27.60	S 88.02° E	2815.20
117	7°14'14"	7.24	27.60	S 88.02° E	2842.80
118	7°14'14"	7.24	27.60	S 88.02° E	2870.40
119	7°14'14"	7.24	27.60	S 88.02° E	2898.00
120	7°14'14"	7.24	27.60	S 88.02° E	2925.60
121	7°14'14"	7.24	27.60	S 88.02° E	2953.20
122	7°14'14"	7.24	27.60	S 88.02° E	2980.80
123	7°14'14"	7.24	27.60	S 88.02° E	3008.40
124	7°14'14"	7.24	27.60	S 88.02° E	3036.00
125	7°14'14"	7.24	27.60	S 88.02° E	3063.60
126	7°14'14"	7.24	27.60	S 88.02° E	3091.20
127	7°14'14"	7.24	27.60	S 88.02° E	3118.80
128	7°14'14"	7.24	27.60	S 88.02° E	3146.40
129	7°14'14"	7.24	27.60	S 88.02° E	3174.00
130	7°14'14"	7.24	27.60	S 88.02° E	3201.60
131	7°14'14"	7.24	27.60	S 88.02° E	3229.20
132	7°14'14"	7.24	27.60	S 88.02° E	3256.80
133	7°14'14"	7.24	27.60	S 88.02° E	3284.40
134	7°14'14"	7.24	27.60	S 88.02° E	3312.00
135	7°14'14"	7.24	27.60	S 88.02° E	3339.60
136	7°14'14"	7.24	27.60	S 88.02° E	3367.20
137	7°14'14"	7.24	27.60	S 88.02° E	3394.80
138	7°14'14"	7.24	27.60	S 88.02° E	3422.40
139	7°14'14"	7.24	27.60	S 88.02° E	3450.00
140	7°14'14"	7.24	27.60	S 88.02° E	3477.60
141	7°14'14"	7.24	27.60	S 88.02° E	3505.20
142	7°14'14"	7.24	27.60	S 88.02° E	3532.80
143	7°14'14"	7.24	27.60	S 88.02° E	3560.40
144	7°14'14"	7.24	27.60	S 88.02° E	3588.00
145	7°14'14"	7.24	27.60	S 88.02° E	3615.60
146	7°14'14"	7.24	27.60	S 88.02° E	3643.20
147	7°14'14"	7.24	27.60	S 88.02° E	3670.80
148	7°14'14"	7.24	27.60	S 88.02° E	3698.40
149	7°14'14"	7.24	27.60	S 88.02° E	3726.00
150	7°14'14"	7.24	27.60	S 88.02° E	3753.60
151	7°14'14"	7.24	27.60	S 88.02° E	3781.20
152	7°14'14"	7.24	27.60	S 88.02° E	3808.80
153	7°14'14"	7.24	27.60	S 88.02° E	3836.40
154	7°14'14"	7.24	27.60	S 88.02° E	3864.00
155	7°14'14"	7.24	27.60	S 88.02° E	3891.60
156	7°14'14"	7.24	27.60	S 88.02° E	3919.20
157	7°14'14"	7.24	27.60	S 88.02° E	3946.80
158	7°14'14"	7.24	27.60	S 88.02° E	3974.40
159	7°14'14"	7.24	27.60	S 88.02° E	4002.00
160	7°14'14"	7.24	27.60	S 88.02° E	4029.60
161	7°14'14"	7.24	27.60	S 88.02° E	4057.20
162	7°14'14"	7.24	27.60	S 88.02° E	4084.80
163	7°14'14"	7.24	27.60	S 88.02° E	4112.40
164	7°14'14"	7.24	27.60	S 88.02° E	4140.00
165	7°14'14"	7.24	27.60	S 88.02° E	4167.60
166	7°14'14"	7.24	27.60	S 88.02° E	4195.20
167	7°14'14"	7.24	27.60	S 88.02° E	4222.80
168	7°14'14"	7.24	27.60	S 88.02° E	4250.40
169	7°14'14"	7.24	27.60	S 88.02° E	4278.00
170	7°14'14"	7.24	27.60	S 88.02° E	4305.60
171	7°14'14"	7.24	27.60	S 88.02° E	4333.20
172	7°14'14"	7.24	27.60	S 88.02° E	4360.80
173	7°14'14"	7.24	27.60	S 88.02° E	4388.40
174	7°14'14"	7.24	27.60	S 88.02° E	4416.00
175	7°14'14"	7.24	27.60	S 88.02° E	4443.60
176	7°14'14"	7.24	27.60	S 88.02° E	4471.20
177	7°14'14"	7.24	27.60	S 88.02° E	4498.80
178	7°14'14"	7.24	27.60	S 88.02° E	4526.40
179	7°14'14"	7.24	27.60	S 88.02° E	4554.00
180	7°14'14"	7.24	27.60	S 88.02° E	4581.60
181	7°14'14"	7.24	27.60	S 88.02° E	4609.20
182	7°14'14"	7.24	27.60	S 88.02° E	4636.80
183	7°14'14"	7.24	27.60	S 88.02° E	4664.40
184	7°14'14"	7.24	27.60	S 88.02° E	4692.00
185	7°14'14"	7.24	27.60	S 88.02° E	4719.60
186	7°14'14"	7.24	27.60	S 88.02° E	4747.20
187	7°14'14"	7.24	27.60	S 88.02° E	4774.80
188	7°14'14"	7.24	27.60	S 88.02° E	4802.40
189	7°14'14"	7.24	27.60	S 88.02° E	

SITUATED IN SECTION 22, TOWNSHIP 10 SOUTH, RANGE 19 EAST, CITY OF GAINESVILLE, ALACHUA COUNTY, FLORIDA





City of Gainesville

*City Commission Meeting:
June 3, 2021*

Petition CC-21-46 SUB. EDA, Inc. (Sergio Reyes), agent for Oaks Preserve Parcel Owners. Final plat review for 76 lots on 19.77 acres, Oaks Preserve Cluster Subdivision, Phase 1, located in the 5200 Block of Archer Road, south side. Zoned: RSF-4 (single-family residential 8 dwelling units per acre). (Related to Legislative Matter # 171022 and Petition DB-18-17 SUB)

***Final Plat Review for Oaks Preserve
Cluster Subdivision, Phase 1
Legistar # 210002.***

Staff's Recommendation

**Approve Petition CC-21-46
SUB, Final Plat Phase 1,
Oaks Preserve Cluster
Subdivision, adopting
Resolution # 210002**

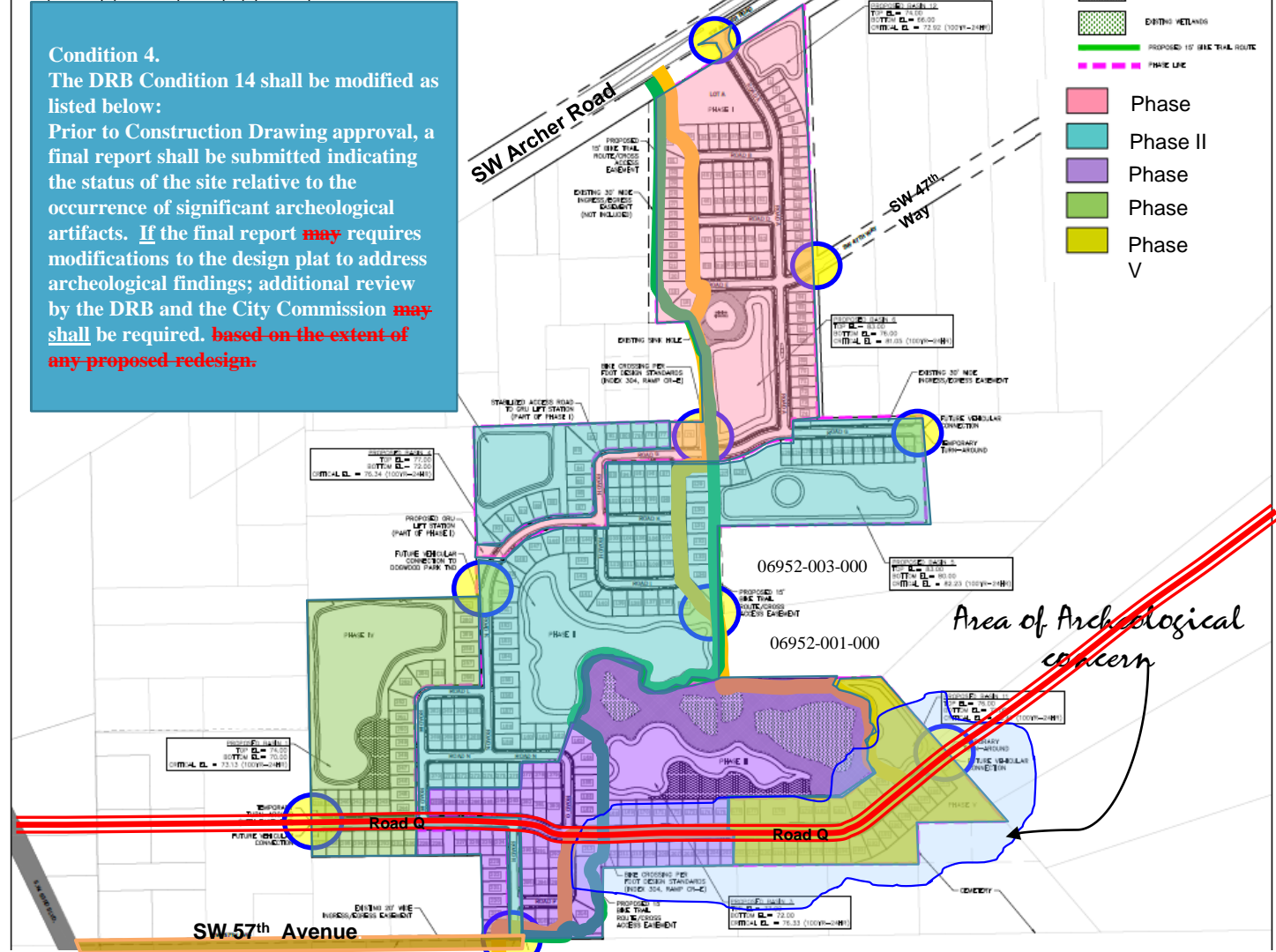
Within 12 months
after final plat approval, the
subdivider shall construct the
subdivision improvements
required by this section.

A lush green forest with a body of water and tall grass in the foreground. The text "THE END" is overlaid in the center.

THE END

Pleased to answer any questions

Prior to Construction Drawing approval, a final report shall be submitted indicating the status of the site relative to the occurrence of significant archeological artifacts. If the final report ~~may~~ requires modifications to the design plat to address archeological findings; additional review by the DRB and the City Commission ~~may~~ shall be required. ~~based-on-the-extent-of any-proposed-redesign.~~





City of Gainesville

*City Commission Meeting:
May 20, 2021*

Petition CC-21-09 SUB. CHW, LLC. Agent for ...
Final plat review for 96 lots on 25.90 acres, Grand
Oaks Subdivision, Phase II, located in the vicinity of
SW 17th Road and SW 60th. Terrace. (Related to
Legislative Mater #180304 and Petition DB-18-56
SUB)

***Final Plat Review for Grand Oaks
Cluster Subdivision, Phase 2
Legistar # 201078***

Department of Sustainable Development

Prepared by Lawrence Calderon

Staff's Recommendation

**Approve Petition CC-21-09
SUB, Final Plat Phase 2,
Grand Oaks Cluster
Subdivision, adopting
Resolution # 201078**

Within 12 months
after final plat approval, the
subdivider shall construct the
subdivision improvements
required by this section.