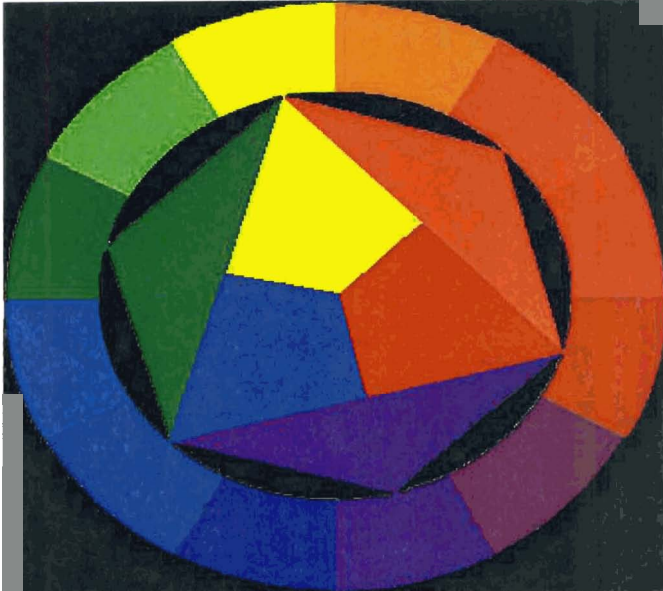


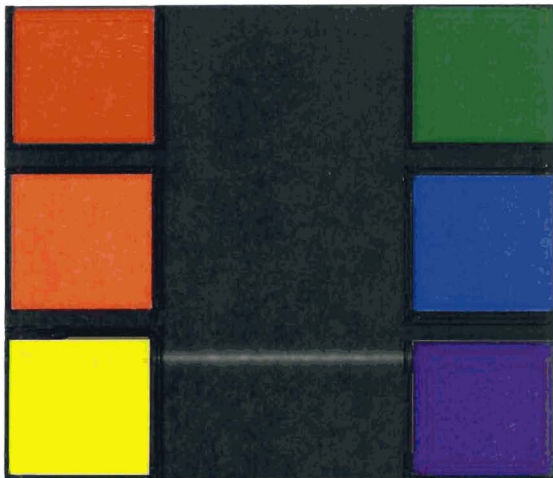
From: Betsy Whitaker [betsy@quixnet.net]
Sent: Thursday, February 21, 2008 4:37 PM
To: JRLOVV@aol.com
Cc: Betsy Whitaker
Subject: Fire Hydrants

File #070582

The attached color wheel contains primary, secondary and tertiary colors.



if we continue, various combinations and different hues from these colors allow for an interesting variety without being offensive. I don't want to stifle creativity but we want them in good taste. Neon is not appropriate, but a variety of colors should be encouraged and could create some darling hydrants. See the information below on color combinations. Let me know your thoughts. Thanks
Betsy



Colors are also divided into cool and warm categories. Warm colors are red, orange and yellow. The cool colors are green, blue and violet.



Tint - White mixed with any hue

Shade - Black mixed with any hue

Related Color Schemes

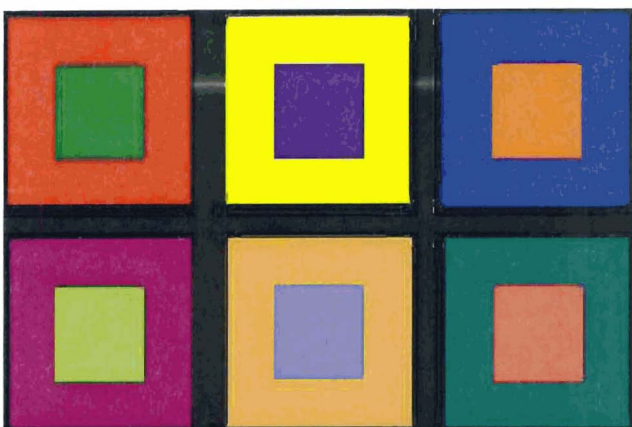


Monochromatic - This color scheme uses a single hue. (example: red AND its varying tints and shades)



Analogous - This scheme uses adjacent hues. (example: red, red-orange, and red-violet)

Contrasting Color Schemes



If two hues are opposite each other on the color wheel they are considered to be **complementary colors**. When used together in a design they make each other seem brighter and more intense. (example: red and green)